

# 2025 ALPINE SALES LIST



CH Pleasant Grove WFM Repaid EX92  
2024 ADGA National RGCH and Reserve Best Udder

## PLEASANT GROVE DAIRY GOATS

CRAIG KOOPMANN  
6142 ROLLER COASTER RD  
EPWORTH, IOWA 52045  
563-599-1520  
[CKOOPMANN@MSN.COM](mailto:CKOOPMANN@MSN.COM)

Welcome to Pleasant Grove Dairy Goats. Located in east central Iowa, I've had purebred alpiners since 1986, when I joined ADGA. While I enjoy showing the does, the main focus has been and continues to be the commercial dairy I have operated since 1988. Our milk is shipped to the Saputo cheese plant in Belmont, WI. I currently milk around 300 does of two breeds; Purebred Alpines and American Saanens. The herd is approximately 70% Alpine and 30% Saanen, with a few Rec Grades mixed in (yes, accidents do occasionally happen during breeding season). My breeding philosophy focuses on three main areas: milk production, udders, and legs. Being a commercial dairy, I want my does to milk well and for many lactations. We are finally back on DHIA test in 2021 – some impressive records being made.

As I mentioned earlier, I enjoy showing the does. Thanks to my family, I am usually able to attend about 6 shows (with 10-12 sanctioned rings) yearly, and have attended nearly every National Show in the last 20 years. Our Alpines have fared well at these National Shows; we've had 10 class winners, 35 Top-5 placings, 27 udder placings, Reserve National GCH (2011) and 2 National Junior GCH (2007, 2021). We've also won every group class at the National Show, and are the breeder of 4-time National Premier Sire, +\*B Pleasant-Grove Super Saga and breeder/owner of 2021 Nat'l Premier Sire Pleasant Grove RR Freeze Frame. We've had several animals selected into the ADGA Spotlight and Colorama Sales in recent years.

When buying from Pleasant Grove, you can be confident of both the production and type in your purchase. We will not sell any buck for breeding purposes that we would not be willing to use ourselves.

We are a CAE negative herd via annual herd testing, and abscess free. Health is a priority, so kids are still raised on a CAE prevention program, being removed from dams at birth and given high quality colostrum replacer. They are raised on a high quality milk replacer and weaned at 8-10 weeks old. They are offered a starter grain at 2 weeks of age and receive alfalfa/grass mix hay after weaning.

If you would like to purchase a kid, I require a \$100 deposit to reserve your choice, with the balance due upon notification that your kid has been born. Deposits are nonrefundable unless the kid of your choice is not born or not of saleable quality. Unless prior arrangements are made, kids should be picked up at the farm or shipped by 4 weeks of age. Buyer is responsible for shipping costs, including crate, health certificate, etc. Make checks payable to: **CRAIG KOOPMANN**.

Thank you for your interest in Pleasant Grove Dairy Goats. Hopefully you find something to your liking in this brochure. If you have any questions, feel free to contact me at 563-599-1520 or [ckoopmann@msn.com](mailto:ckoopmann@msn.com). We also have a [Pleasant Grove Dairy Goats](#) facebook page that we can be contacted through.

## 2024 Pleasant Grove Mature Does

### **\*\*National Show Class Winner\*\***

### **\*\*2024 ADGA National Show RGCH and Reserve Best Udder Alpine\*\***

1. CH Pleasant-Grove WFM Repaid A2229866  
LA 3-06 EX92 EEEE Born 2-18-20  
DHIA 1-01 586d 6495M 3.9% 251F 3.2% 211P  
2-11 302d 3549M 3.6% 129F 3.3% 117P  
3-11 294d 4268M 3.7% 158F 3.5% 149P (INC)  
SS: Windrush Farms Wonder Blizzard  
S: Windrush Farms Blizzard Manny  
SD: Windrush Farms IRS Emily  
  
DS: +\*B SGCH Marran Rose's Rochester  
D: CH Pleasant-Grove RR Repaired VG86  
DD: Pleasant-Grove Future Repairs VG86



Repaid was a stylish solid black yearling with a strong will to milk, and we ultimately decided to milk her through on her first lactation. Even on extended lactation, she maintained production and bloom. Hitting the show ring for the first time as a 2 year old and 400 plus days in lactation, Repaid consistently was at the head of the line. She earned 3xRGCH, 2xGCH, 2xBOB, 2xBDIS to become a permanent champion. She also made the trip to Nationals, where she stood 12<sup>th</sup> in a competitive 2 year old class. Maturing nicely, Repaid excels in angularity, stretch, levelness, and all udder attachments. Shown only once in 2023, Repaid was 4<sup>th</sup> place 3 year old at the National Show. Repaid is bred to Sin City on 8-29-24

### **\*\*National Show 2<sup>nd</sup>/3<sup>rd</sup> Udder 5/6 year old\*\***

2. CH Pleasant Grove Ripple Moogaloo A2320431  
LA 5-07 EX93 EEEE Born 1-29-18  
DHIA 5-00 282d 3030M 3.2% 98F 3.1% 95P  
6-00 286d 3504M 3.7% 130F 3.2% 112P (INC)  
SS: +\*B SGCH Marran Rose's Rochester  
S: Pleasant-Grove RR Ripple  
SD: CH Pleasant-Grove Live Report EX91  
  
DS: Kickapoo Valley Epic Falcon  
D: Pleasant-Grove 121 Epic Moves  
DD: Pleasant-Grove 79 Moola Sins



Sometimes, you just have to wait and let a doe mature. For years, Moogaloo was referred to as "that hairy black doe". Finally this year, I stepped back and said; I think there is a pretty nice mature doe under all that hair. I clipped her up and went "oh, you're definitely going to a show!!" Debuting at a 6 ring show, she was 3x1st and 1xRGCH despite a very nervous walk on Saturday. Feeling a bit more comfortable on Sunday, she was again 3x1st and 1xRGCH, but also 2xGCH/BDIS. Off to Nationals, where Moogaloo stood 4<sup>th</sup> in the 5/6 yr old class. Next came appraisal, and an unexpected EX93 EEEE. Finally, Moogaloo finished her champion status with a GCH/BOB/BUOB win at the '23 Iowa State Fair. For an encore, Moogaloo was again GCH/BOB/BUOB at the '24 Iowa State Fair, but also added BDIS/BUIS. She was also 2<sup>nd</sup>/3<sup>rd</sup> udder in the 5/6 year old class at the 2024 National Show.

Alpha S1 Casein A/F

Moogaloo is bred to Joust on 9-15-24



3. Pleasant-Grove RR Dayvine A1856496  
LA 5-06 EX92 VEEE Born 2-6-16  
LA 7-06 EX93 EEEE

SS: SG Sunshine Conina Condor  
S: +\*B SGCH Marran Rose's Rochester  
SD: GCH Marran Rapture's Rose

DS: Pleasant Grove Super Standout  
D: SGCH Pleasant-Grove SSO Divine EX92  
DD: GCH Milar Farm Little Diva EX91



Dayvine is a beautifully correct doe that shows an extreme will to milk. She last freshened in February of 2020, yet continues to produce daily almost 5 years later. At age 8, and 4.5 years into her current lactation, Dayvine finally got to be shown. She was 2xGCH/BDIS at the Iowa Spring Classic, 5<sup>th</sup> place aged doe at Nationals, and 2<sup>nd</sup> place at the Iowa State Fair behind herdmate Moogaloo (who was named GCH/BDIS/BUIS). The picture above is from the 2024 National show. Frustrated that Dayvine would not settle, we chose to try IVF on her this year. The result was 4 pregnancies from 5 embryos with 2 potential sires to each embryo.

Dayvine was flushed to Pleasant Grove Liason Superior and Pleasant Grove MFM Jamon – Kids expected Feb 11, 2025

### **\*\*Deceased – Reference Only\*\***

CH Pleasant-Grove RR Jezebel A1905506  
LA 5-06 EX92 EEEE Born 2-19-16  
LA 7-06 EX92 EEEE

SS: SG Sunshine Conina Condor  
S: +\*B SGCH Marran Rose's Rochester  
SD: GCH Marran Rapture's Rose

DS: Sand Dance SDM Dream Maker  
D: Pleasant-Grove Dreamt of Jeani  
DD: Pleasant-Grove Zen Jean  
DDD: CH Pleasant Grove SSO Jammin EX92



We've always seen the quality in Jezebel, but she was always in the shadow of our other same age Rochester daughters, and even Jamboree. She has proven she can throw beautiful daughters (4 EX91 and 92 daughters, all with 4000+ lb lactations) and has shown a strong will to milk, with a 3 year lactation from 2020 to 2023. Looking great last summer, we decided to make her debut show the 2022 National Show. And she didn't disappoint with a 3<sup>rd</sup>/3<sup>rd</sup> udder placing despite being almost 800 days in milk. She followed that up with another 3<sup>rd</sup> place finish at the 2023 National Show. She was also GCH/BOB/BUOB at the 2022 Iowa State Fair, and 2x GCH/BDIS and 2xRGCH at club shows in 2023. Unfortunately Jezebel died unexpectedly just before breeding season in 2024.



4. Pleasant Grove WFM Jezie A2117709  
 LA 4-07 EX92 EEEE Born 1-25-19  
 DHIA 3-00 305d 4360M 3.2% 142F 2.9% 126P  
 4-00 304d 4550M 3.4% 154F 2.8% 127F  
 5-00 285d 4158M 3.1% 129F 2.7% 114P (INC)  
 SS: \*B Windrush Farms Wonder Blizzard  
 S: \*B Windrush Farms Blizzard Manny  
 SD: Windrush Farms IRS Emily

DS: +\*B SGCH Marran Rose's Rochester  
 D: CH Pleasant Grove RR Jezebel EX92  
 DD: Pleasant Grove Dreamt of Jeani



From promising yearling to deep productive 5 year old. Jezie has a long neck, long body, correct feet and legs, and an outstanding mammary with a beautiful rear udder arch (and 50 RUH!!!!). We can't show them all, but we are content to leave Jezie at home making 4000 lb lactations (3 straight now). Jezie is the dam of the 2023 ADGA National Reserve Junior Champion, and 2023 Spotlight Sale doe. Jezie is bred to Mathias on 8-30-24

5. Pleasant Grove MFM Jezlie A2326003  
 LA 1-07 VG86 GGGE Born 1-30-22  
 DHIA 1-02 241d 1646M 2.9% 48F 2.9% 48P  
 2-00 280d 3200M 3.1% 100F 2.8% 91P (INC)

SS: +\*B SG Kickapoo Valley Proud Hawkeye  
 S: \*B McCann Farm HWK Maelstrom  
 SD: SGCH McCann Farm Fern EX92

DS: +\*B Windrush Farms Blizzard Manny  
 D: Pleasant Grove WFM Jezie EX92  
 DD: CH Pleasant Grove RR Jezebel EX92



Jezlie is the littermate sister to our 2023 National Reserve JrGCH and Spotlight consignment. She has the structural correctness and excellent udder that is prevalent in this family, it's just in a rather immature package right now. Can't wait to see this one mature. Jezlie is bred to Joust on 9-1-24

6. Pleasant Grove WFM Jazzie A2117710  
 LA 4-07 EX92 EEEE Born 1-25-19  
 DHIA 1-11 305d 4075M 4.3% 171F 3.7% 145P  
 Ext 611d 6636M 4.3% 283F 3.7% 248P  
 5-00 265d 2780M 3.8% 107F 3.9% 108P  
 SS: \*B Windrush Farms Wonder Blizzard  
 S: \*B Windrush Farms Blizzard Manny  
 SD: Windrush Farms IRS Emily

DS: +\*B SGCH Marran Rose's Rochester  
 D: CH Pleasant Grove RR Jezebel EX92  
 DD: Pleasant Grove Dreamt of Jeani



Jazzie was an extremely angular yearling who needed some time to fill out her frame. Because of her extreme will to milk, and somewhat gangly appearance as a 2 year old, we decided to milk her an extended lactation. With the less stressful extended lactation, Jazzie has matured nicely with a deep wide chest, sweeping open rib, and quality udder with a pleasing long fore udder. Pictured at age 4. Jazzie is bred to Forge on 9-18-24

7. Pleasant Grove Mile Jazzier A2370944  
Not Appraised Born 1-30-23  
DHIA 1-00 272d 2412M 3.1% 74F 3.3% 79P (INC)

SS: +\*B Pleasant Grove Super Standout  
S: Pleasant-Grove SSO Milemarker  
SD: Pleasant-Grove Frame Myina EX91

DS: +\*B Windrush Farms Blizzard Manny  
D: Pleasant Grove WFM Jazzie EX92  
DD: CH Pleasant Grove RR Jezebel EX92

As is typical for this maternal line, Jazzier is an immature yearling with loads of potential. I love her openness and sweep of rib, the well attached udder, strong medial and excellent teat placement. Knowing this family, I fully expect Jazzier to mature nicely and really hit her production stride in the next year or two.

Bred to Joust on 9-20-24

8. Pleasant Grove WFM Jezz A2165540  
LA 3-07 EX91 EEEE Born 1-29-20  
DHIA 1-01 611d 7172M 3.0% 217F 3.0% 220P  
2-11 305d 4181M 2.8% 119F 2.9% 123P  
4-00 285d 4097M 3.0% 124F 2.9% 119P (INC)  
SS: \*B Windrush Farms Wonder Blizzard  
S: \*B Windrush Farms Blizzard Manny  
SD: Windrush Farms IRS Emily

DS: +\*B SGCH Marran Rose's Rochester  
D: CH Pleasant Grove RR Jezebel EX92  
DD: Pleasant Grove Dreamt of Jeani



Much like her sister Jazzie, Jezz was an extremely angular and somewhat gangly yearling with an incredible will to milk. She was also given the chance to mature out some with an extended lactation. Jezz has a deep and well sprung/open rib, excellent rear legs, capacious well attached udder with a very extended fore udder.

Jezz is bred to Roman on 8-23-24

9. CH Pleasant Grove Zorro Jamboree A1924950  
LA 2-04 EX91 EEEE Born 2-19-16  
LA 5-06 EX91 EEEE  
DHIA 4-11 305d 4085M 3.2% 137F 2.9% 121P  
5-11 288d 2970M 2.9% 88F 2.7% 82P

SS: \*B Hoach's Lyric Lucky  
S: YBNVS Lucky Zorro  
SD: CH YBNVS Rico Suave's Zamira

DS: \*B Pleasant Grove Act Menacing  
D: Pleasant Grove Amen I'M Jammin EX91  
DD: CH Pleasant Grove SSO Jammin EX92



Jamboree was often overlooked because she is the same age as our oldest Rochester daughters, but she is one of our most structurally correct does and has a near ideal udder in all aspects. Clipping her up for appraisal as a 2 yr old gave us an appreciation for her quality, and the decision was made to keep her 2018 son. Jamboree finally earned her last leg toward CH status in 2022, but her real value lies in her offspring: An USDA \*Elite\* son, EX91 daughter, and multiple EX90+ granddaughters.

\*\*\* Jamboree was flushed via IVF in 2024. We have several pregnancies to +\*B SGCH Marran Rose's Rochester (a repeat of the cross that produced ELITE buck, Pleasant Grove RR All Star Jam).



10. Pleasant Grove WFM Jamba A2125109  
 LA 4-07 EX91 EEEE Born 1-25-19  
 DHIA 3-00 291d 2462M 3.6% 89F 2.8% 70P  
 4-00 305d 2737M 3.3% 90F 2.7% 75P  
 5-01 253d 2525M 3.7% 93F 2.8% 70P  
 SS: \*B Windrush Farms Wonder Blizzard  
 S: Windrush Farms Blizzard Manny  
 SD: Windrush Farms IRS Emily

DS: \*B Pleasant Grove Act Menacing  
 D: CH Pleasant Grove Zorro Jamboree EX91  
 DD: Pleasant Grove Amen I'M Jammin EX91



Dam: CH Pleasant Grove Zorro Jamboree

Jamba is very similar to her dam in structure, with a deep open rib, wide chest, V shoulders and excellent legs. Her mammary is top notch with nice FU length, RU arch, and outstanding medial and teat placement. Good production with strong components. Jamba is a 7<sup>th</sup> generation EX 90+ doe. Jamba is bred to Sin City on 8-30-24

11. Pleasant Grove Marcos Jinkies A2229867  
 LA 3-06 EX90 EEEV Born 2-22-20  
 DHIA 1-11 262d 2379M 3.2% 75F 3.1% 73P  
 3-00 305d 2750M 3.3% 92F 3.1% 85P  
 4-00 251d 2889M 3.1% 89F 3.0% 86P (INC)  
 SS: ++\*B Willow Run GB Juan Carlos  
 S: Pleasant Grove Juan Marcos  
 SD: Pleasant Grove Long Milkdrop EX91

DS: Windrush Farms Blizzard Manny  
 D: Pleasant Grove WFM Jambi  
 DD: CH Pleasant Grove Zorro Jamboree EX91



Jinkies is one of two maternal granddaughters of Jamboree that we are milking. As FF 2 year old, we were impressed by Jinkies structural correctness, strength and width – traits we also saw early on with Jamboree. Fresh as a 3 year old, Jinkies matured nicely as reflected in her EX90 appraisal and bumped up her production. She also has a very promising milking yearling daughter. Jinkies is bred to Mathias on 8-29-24

12. Pleasant Grove Drop Jinkles A2326007  
 Not Appraised Born 1-30-22  
 DHIA 1-01 256d 1900M 3.9% 75F 3.2% 61P  
 2-00 295d 2690M 3.5% 94F 3.1% 84P (INC)

SS: Pleasant Grove RR All Star Jam  
 S: Pleasant Grove Jam MicDrop  
 SD: Pleasant Grove Long Milkdrop EX91

DS: Pleasant Grove Juan Marcos  
 D: Pleasant Grove Marcos Jinkies EX90  
 DD: Pleasant Grove WFM Jambi



Jinkles is heavily linebred on Pleasant Grove Long Milkdrop EX91 (pictured), and is virtually a carbon copy. Jinkles is structurally correct with excellent shoulders and leg set, and a beautifully attached mammary system with ideal teat placement. Can't wait to see this one mature the next couple years. Jinkles is bred to Arch on 8-29-24



13. Pleasant Grove WFM Jasmin A2223008  
 LA 3-07 EX91 EEEE Born 1-30-20  
 DHIA 2-00 255d 2191M 3.6% 78F 3.0% 66P  
 2-11 305d 2570M 3.4% 88F 3.1% 79P  
 4-00 273d 2385M 3.6% 86F 3.0% 72P (INC)  
 SS: \*B Windrush Farms Wonder Blizzard  
 S: Windrush Farms Blizzard Manny  
 SD: Windrush Farms IRS Emily

DS: ++\*B SGCH Marran Rose's Rochester  
 D: Pleasant Grove RR Jasmine  
 DD: CH Pleasant Grove Zorro Jamboree EX91

Jasmin is not a real big doe, but she has all the length, depth, width and structural correctness we've come to expect from the Manny x Rochester cross. She also possesses the well attached, quality mammary system of her granddam, Jamboree. Jasmin's dam was the littermate sister to All Star Jam. Jasmin is bred to Match on 8-30-24



14. Pleasant-Grove Jam Jambeau A2159942  
 LA 3-07 VG88 VEEV Born 1-30-20  
 DHIA 2-00 299d 2560M 3.6% 93F 3.5% 89P  
 3-00 296d 2973M 3.2% 96F 3.2% 95P  
 4-00 269d 3061M 3.3% 101F 3.2% 98P  
 SS: +\*B SGCH Marran Rose's Rochester  
 S: Pleasant Grove RR All Star Jam  
 SD: CH Pleasant Grove Zorro Jamboree EX91  
 DS: \*B Pleasant Grove Act Menacing  
 D: Pleasant Grove Amen I'M Jammin EX91  
 DD: CH Pleasant Grove SSO Jammin EX92

A fancy Sundgau, Jambeau has all the structural correctness and outstanding mammary system that maternal sister/paternal granddam Jamboree had at the same age. I wish we would have gotten a picture of her this summer. Jambeau will be one to watch in the coming years as she matures.

Jambeau is bred to Mile on 9-2-24

15. Pleasant-Grove Jam Jacasa A2224700  
 LA 3-07 EX90 VEEE Born 1-30-20  
 DHIA 1-11 264d 2656M 3.1% 82F 3.0% 79P  
 2-11 304d 3445M 2.8% 95F 2.8% 97P  
 4-00 292d 3650M 3.3% 122F 3.2% 112P (INC)  
 SS: +\*B SGCH Marran Rose's Rochester  
 S: Pleasant Grove RR All Star Jam  
 SD: CH Pleasant Grove Zorro Jamboree EX91  
 DS: \*B Pleasant Grove Act Menacing  
 D: Pleasant Grove Motion Jocosa EX91  
 DD: Pleasant Grove Zen Journey EX90  
 DDD: CH Pleasant Grove SSO Jammin EX92

TALL, LOOONG, and smooth.... Patience, Craig! Just let her mature...  
 Jacasa is bred to Roman on 9-9-24



16. Pleasant-Grove Jams Forever A2159943  
 LA 1-06 VG88 VEVE Born 2-2-20  
 LA 3-06 EX90 VEVE  
 DHIA 1-00 266D 3339M 3.2% 107F 2.9% 98P  
 2-00 286D 3391M 3.1% 106F 3.0% 101P  
 3-00 305d 4400M 3.3% 147F 3.0% 130P  
 4-01 254d 4277M 3.3% 140F 2.8% 121P (INC)  
 SS: +\*B SGCH Marran Rose's Rochester  
 S: Pleasant Grove RR All Star Jam  
 SD: Pleasant-Grove Zorro Jamboree EX91  
  
 DS: Pleasant-Grove Zen Machine  
 D: CH Pleasant-Grove Machine Fixed EX91  
 DD: Pleasant-Grove Electric Feet EX90



We really like the potential in this young doe; excellent udder shape and attachment, excellent rear legs, open angular ribs, and a beautiful front end assembly. And the strong production this family is known for – Forever started with consecutive 3300 lb lactations at age 1&2, followed by consecutive 4400 lb lactations the last 2 years. We have retained her 2021 son, Forge, as a herdsire. Forever is bred to Mamoa on 10-2-24

17. Pleasant Grove AK Forewarn A2370949  
 Not Appraised Born 1-29-23  
 DHIA 1-00 272d 2449M 3.7% 91F 2.8% 68P (INC)  
  
 SS: Pleasant-Grove RR Freeze Frame  
 S: \*B Kara Kahl Akimoto  
 SD: SGCH Kara Kahl Akebono EX94  
  
 DS: McCann-Farm HWK Maelstrom  
 D: Pleasant-Grove MFM Foregone  
 DD: Pleasant-Grove Jams Forever EX90

Forewarn is an exciting yearling. She excels in angularity, rear leg set, openness of rib, height and width of RU, length and smoothness of FU, and strength of medial. She is very level over the top and has a pleasing side profile. I'm excited to see her with another freshening and more maturity. I fully expect Forewarn to be in our show string in 2025. Her dam is the littermate sister to our herd sire, Forge

Forewarn is bred to Joust on 8-30-24

18. Pleasant Grove WFM Faxing A2159979  
 LA 3-07 EX90 VEVE Born 1-30-20  
 DHIA 1-01 271d 2690M 3.6% 98F 3.0% 80P  
 2-11 305d 3112M 3.4% 106F 3.1% 95P  
 4-01 253d 2805M 3.7% 105F 2.9% 81P (INC)  
 SS: Windrush Farms Wonder Blizzard  
 S: Windrush Farms Blizzard Manny  
 SD: Windrush Farms IRS Emily  
  
 DS: SGCH ++\*B Marran Rose's Rochester  
 D: Pleasant-Grove RR Faxed EX91  
 DD: Pleasant-Grove Electric Feet EX90



One of several fancy young does we have, Faxing is appreciated for her well attached udder, long neck, smooth shoulders and correct leg set. Her EX91 dam is a maternal sister to Fixed (Dam of Forever, above).

Faxing is bred to Mile on 8-30-24

19. Pleasant Grove Rockin Factoid A2326081  
 Not Appraised Born 1-29-22

Factoid is a promising young doe, though immature and a bit gangly at this point.



DHIA 1-00 281d 2514M 3.4% 86F 3.1% 77P  
2-00 266d 2819M 3.5% 98F 3.1% 88P (INC)  
SS: Pleasant Grove Juan Marcos  
S: Pleasant Grove Marcos Moonrock  
SD: Pleasant Grove Frame Moodswing VG89

DS: SGCH ++\*B Marran Rose's Rochester  
D: Pleasant-Grove WFM Faxing EX90  
DD: Pleasant-Grove RR Faxed EX91

20. CH Autumn-Acres MY Wisteria A1692405  
LA 3-04 VG88 VVVV Born 5-8-14  
LA 7-04 EX91 VEEE

DHIA 6-09 305D 3924M 3.7% 146F 3.0% 116P  
9-09 228d 3528M 3.0% 106F 2.8% 99P  
SS: Windrush Farms Wonder Blizzard  
S: Windrush Farms Blizzard Manny  
SD: Windrush Farms IRS Emily

DS: Pleasant Grove Larry Legend  
D: CH Pleasant Grove Larry Rosarry VG89  
DD: Pleasant Grove Act Rosey EX91

But her stature, extreme length of body, openness of rib, and well attached udder has us excited about how she will mature. Factoid is colored almost exactly like her dam. We saw a nice bump in production as a 2 year old as she closes in on 3000 lbs, and hope to show Factoid in the coming years.

Factoid is bred to Service on 8-30-24



We are so glad to have this doe in the herd. We reluctantly sold her dam after she was 2<sup>nd</sup>/2<sup>nd</sup> udder milking yearling at the 2011 National Show. However, our agreement called for a doe kid back, and though we had to wait almost 3 years, it was worth the wait! We love Wisteria's sharpness and angularity, as well as her structural correctness. Her udder is superb, with a high arching rear udder, and a long, smoothly blended FU. Wisteria was 1<sup>st</sup>/1<sup>st</sup> udder 3 year old, RGCH, and BUOB in her milking debut, the 2017 Iowa State Fair. She is also the dam to our 2017 Alpine Spotlight Sale milking yearling. In 2018, Wisteria quickly finished her Championship, winning 3xGCH/BOB, 1xRGCH, and 2xBDIS her first weekend out. She was 11<sup>th</sup> place at the 2018 National Show. Multiple EX91 daughters. Wisteria is bred to Forge on 8-30-24

### **\*\*Deceased – Reference Only\*\***

Pleasant Grove Future Risotto A1936024  
LA 2-06 EX91 VEEE Born 1-27-17  
LA 4-07 EX90 VEEE

SS: ++\*B Hoach's Lyric Liason  
S: Loughlin's Back To The Future  
SD: Loughlin's Fiona

DS: Windrush Farms Blizzard Manny  
D: CH Autumn-Acres MY Wisteria VG88  
DD: CH Pleasant Grove Larry Rosarry VG89



We fell in love with the udder on Risotto when she freshened as a yearling, and even more when she came into heavy production as a 2 year old, with the strength and correctness to sustain it. However, she was overlooked a bit (we thought she was small) because she always came in the parlor between our two largest Alpines. That all changed when Risotto was clipped up for appraisal – she measured right at 30 inches as a 2 year old, appraised EX91, and looked stunning in the picture we snapped. Realizing we had been overlooking her, Risotto went to our only remaining show of 2019, the Iowa State Fair. She was 1<sup>st</sup>/1<sup>st</sup> udder 2 yr old and RGCH in strong competition. We kept her 2020 son by



Redwood Hills Sunshine Reverie, then milked her through in 2021. 19 months fresh at appraisal, Risotto still scored an EX90 as a 4 yr old. She has EX91 and EX90 daughters in the herd. Risotto passed away in 2023, but remains listed here as reference for her daughters still in the herd.

21. Pleasant Grove Frame Ricotta A2042176  
LA 4-05 EX90 EEEV Born 3-17-19  
DHIA 2-00 305D 3523M 3.2% 113F 3.0% 106P  
Ext 595D 7172M 3.2% 229F 3.1% 219P  
3-10 305d 6076M 2.6% 157F 2.6% 160P  
Ext 652d 12078M 2.6% 319F 2.7% 329P  
SS: +\*B SGCH Marran Rose's Rochester  
S: \*B Pleasant Grove RR Freeze Frame  
SD: CH Pleasant Grove Machine Fixed EX91

DS: Loughlin's Back To The Future  
D: Pleasant Grove Future Risotto EX91  
DD: CH Autumn-Acres MY Wisteria EX91



Ricotta had a rough start to her 1<sup>st</sup> lactation at age 2, going to day 160 before delivering a single LARGE dead kid. However, true to her pedigree, she showed a tremendous will to milk and made over 3500 in 305 days and over 7000 lbs in a 2 year extended lactation. Also true to her pedigree, Ricotta is a large framed doe, wide and powerful with a level topline and quality mammary system. I'm excited for a normal kidding and a chance for Ricotta to bloom. Finally kidding in a normal fashion as a 4 year old, bloom is certainly what Ricotta did: Her first DHI test was 18.9 lbs, followed by consistent test days 20+ lbs on her way to a 305 day 6000 lb lactation. Ricotta also showed out in the ring: 10xshown, 10x1st, 1xGCH/BDIS, 4xRGCH (all 4 RGCH wins were to the BDIS).

\*\*\*Ricotta was flushed via IVF in 2024. We have several pregnancies – Sires used were Pleasant Grove Liason Superior and Pleasant Grove MFM Jamon. Kids expected Feb 11, 2025

22. Pleasant Grove Marcos Risatta A2373100  
Not Appraised Born 1-28-23  
DHIA 1-00 272d 2825M 3.1% 88F 3.0% 84P (INC)

SS: +\*B Willow Run GB Juan Carlos  
S: Pleasant Grove Juan Marcos  
SD: Pleasant Grove Long Milkdrop EX91

DS: Loughlin's Back To The Future  
D: Pleasant Grove Future Risotto EX91  
DD: CH Autumn-Acres MY Wisteria EX91



Pleasant Grove Marcos Risatta

An impressive yearling sister to Ricotta, Risatta excels in type. Risatta was shown 5 times in 2024, winning 4x1st and then 5<sup>th</sup> place milking yearling at the National Show. We are pretty excited about the upstandingness, length and levelness, and overall correctness of Risatta. She couples that with a well attached udder, shapely from the rear, smooth in the fore, with a strong medial suspensory ligament. Risatta is bred to Mile on 10-2-24

24. CH Pleasant-Grove Sinful Reaction

LA 1-06 VG88 VVVV Born 2-20-14  
LA 3-07 EX92 EEEE LA 5-05 EX92 EEEE  
DHIA 6-10 259d 2498M 3.6% 89F 3.0% 76P

SS: +\*B Windrush Farms IRS Charmer  
S: \*B PJ-Baileys' Charming Assassin  
SD: GCH PJ-Baileys' Sulten Anzella EX92

DS: \*B Pleasant Grove Amen Longitude  
D: Pleasant-Grove Long Rubdown EX90  
DD: Pleasant-Grove Midas Rubbish



Reaction was one of our first Assassin daughters to freshen, and we couldn't be happier with her large frame (largest doe in the herd), long bone pattern, and well attached udder. 1<sup>st</sup> place all 3 times shown in 2015, including the Iowa State Fair. As a 2 year old, Reaction was 4x1st, 2x2nd, 1xGCH/BDIS, and 1xRGCH. In 2017, she quickly finished her championship, winning GCH/BOB/BDIS in both rings her first time out. Reaction was also the 3<sup>rd</sup> place 3 year old at the 2017 National Show. Due to freshen at 11 years of age, these will likely be Reaction's last kids.

Reaction is bred to Forge on 9-17-24

25. Pleasant-Grove WFM Resting A2159946

LA 3-06 EX91 VEVE Born 2-1-20  
DHIA 1-11 305d 3470M 2.8% 96F 3.0% 103P  
3-00 305d 3500M 3.3% 116F 2.9% 100P  
4-00 290d 4440M 3.2% 142F 2.8% 124P (INC)

SS: Windrush Farms Wonder Blizzard  
S: Windrush Farms Blizzard Manny  
SD: Windrush Farms IRS Emily

DS: +\*B SGCH Marran Rose's Rochester  
D: CH Pleasant-Grove Rochester Reset EX93  
DD: Pleasant-Grove Zen Live Rebound EX90



Resting has a big pedigree to live up to, but she appears to have the structural correctness and style to do just that. Her dam was our second ever EX93, her maternal granddam is a National Class winner, and her maternal grandsire is a 2-time National Premier Sire. Resting's sire has sired multiple National Class winners himself, including a Reserve National Best Udder, and is a full brother to the 2016 National RGCH. Resting has one of the highest RU in the herd, with a strong medial and teat placement. She excels in length of body, angularity, and openness of rib. Maturing nicely, Resting is now appraised EX91, has 4 DHl lactations exceeding 3400 pounds including over 4400 lbs this year.

Resting is bred to Joust on 9-18-24

26. Pleasant-Grove MFM Rested A2284003

LA 2-05 VG88 VVVE Born 3-11-21  
DHIA 1-10 305d 3690M 3.5% 128F 3.1% 113P  
2-10 294d 5050M 3.0% 149F 2.8% 143P (INC)

SS: +\*B SG Kickapoo Valley Proud Hawkeye  
S: \*B McCann Farm HWK Maelstrom  
SD: SGCH McCann Farm Fern EX92

DS: +\*B Windrush Farms Blizzard Manny  
D: Pleasant-Grove WFM Resting EX91  
DD: CH Pleasant-Grove Zen Rochester Reset EX93

Rested is coming into her own as a 3 year old with with a lot of length, openness of rib, and strong leg set. Her udder is beautifully attached, with a high rear udder, smooth fore udder, strong medial and excellent teat placement. Rested is a strong combination of type and production, backed by EX91 and EX93 dam/granddam, a multiple 3400+ lb lactation dam, and now a 5000 lb lactation of her own!

Rested is bred to Joust on 8-31-24



27. Pleasant Grove Atlas Myuna A1811019  
 LA 3-05 EX91 VEEE Born 2-21-16  
 LA 5-06 EX91 EEEE  
 DHIA 4-11 305d 4290M 3.1% 133F 2.8% 120P  
 5-11 245d 4113M 2.9% 118F 2.7% 113P  
 SS: Sand-Dance HLS Rico Suave  
 S: \*B Willow Run Rico Atlas  
 SD: SGCH Maple Glen Classic's Angela  
  
 DS: Pleasant-Grove Challenge Master  
 D: Pleasant Grove Master Mumble EX91  
 DD: Pleasant Grove Money Murmur EX90



I love how this doe has matured! She is deep in the heart, wide in the chest, and smooth in the shoulder. Her long lean neck blends smoothly into a strong and level back. Her udder is nicely shaped with correct 1/3-1/3-1/3 side view. Strong production, peaking at 20+ lbs/day. Shown sparingly, as she is part of our deep group of 6 year olds, Myuna has now placed 2<sup>nd</sup> in her class 4 times at the competitive Iowa State Fair. A strong brood doe as well, with VG89 and EX91 daughters. Myuna is bred to MicDrop on 9-18-24

28. Pleasant-Grove Medallion Mylion A2205298  
 LA 3-07 VG88 VEVV Born 1-29-20  
 DHIA 2-00 289d 3105M 2.9% 91F 2.8% 88P  
 3-00 265d 3542M 3.0% 108F 2.7% 95P  
 4-00 289d 3690M 2.8% 102F 2.7% 100P (INC)  
 SS: +\*B Hoach's NW Zeanna Genesis AI  
 S: \*B Hoach's Rose Medallion  
 SD: GCH Crystal Creeks Irish Rose



Dam: Pleasant Grove Frame Myina EX91

DS: Pleasant-Grove RR Freeze Frame  
 D: Pleasant Grove Frame Myina EX91  
 DD: Pleasant Grove Atlas Myuna EX91  
 Mylion is an outcross AI doe with a bright future. She is a deep bodied, wide doe, with a lot of substance. She has a nicely shaped udder, with height of rear, strength of medial, and teat placement. Mylion is bred AI to Willow Run Good James Jazz on 8-30-24

29. Pleasant-Grove SSO Myona A2184524  
 Not Appraised Born 1-23-21  
 DHIA 1-00 297d 2190M 3.1% 67F 2.9% 63P  
 3-00 284d 3090M 2.9% 90F 2.7% 84P (INC)  
 SS: \*B Pleasant Grove Liason Superior  
 S: \*B Pleasant Grove Super Standout  
 SD: SGCH Stardust Cordite Saba EX93



Pleasant Grove Frame Myona @ 1yr

It is so great to have a Standout daughter back in the herd. It is uncanny how much Myona looks like a young Saba. And so will probably not see the showing until she matures a little (Saba was not shown until age 4, but went on to be a 2 time National Class winner). Good things come to those who wait.... Myona is bred to Match on 10-20-24



30. CH Pleasant-Grove Schwarzee Mabel A1811018  
 LA 1-07 VG86 VVVV Born 2-13-16  
 3-05 VG89 VVVE 5-06 EX92 EEEE  
 DHIA 4-11 253d 2586M 3.6% 93F 3.2% 83P

SS: ++\*B SG Sweet Dreams Golden Boy  
 S: ++\*B SG Sunshine Conit Schwarzee  
 SD: SGCH Sunshine Advancer Conit

DS: \*B Pleasant Grove XXX Longshot  
 D: CH Pleasant Grove Longs Maven EX91  
 DD: Pleasant Grove Mountain Mauve VG88



We owned several Schwarzee daughters in the late 90s, and loved how they matured, so it was an easy choice to bring back Schwarzee genetics via AI. Mabel is a very stylish and correct doe, with a beautiful RU arch and teat placement. She was the 11<sup>th</sup> place milking yearling at the 2017 Natl Show. We are pleased with how this one is maturing! She started 2019 playing the bridesmaid, winning RGCH honors in 4 of her first 5 shows (and earning 1 CH leg). However, she moved up to GCH in her next 3 rings, including a BDIS win while earning her final CH leg. After being dry for 2+ years, Mabel finally settled this summer, though she was exposed to 2 Saanen bucks. She freshened with twin does November 15<sup>th</sup>. I believe they are sired by Alder\*Rose Sly Palermo but they will need DNA typing to make sure they aren't Pleasant Grove Eryx Ghosts sired. Both Saanen type doe kids are available.

31. Pleasant-Grove Cordite Mabyn A2184519  
 LA 3-07 EX90 VEEE Born 1-26-20  
 DHIA 3-00 305d 2583M 3.8% 97F 3.1% 79P  
 3-11 304d 2940M 3.6% 106F 3.2% 93P

SS: +\*B Stardust Schwarzee Rover  
 S: +\*B SG Sunshine Coric Cordite  
 SD: SGCH Sunshine Advancer Coric

DS: ++\*B SG Sunshine Conit Schwarzee  
 D: CH Pleasant-Grove Schwarzee Mabel EX92  
 DD: CH Pleasant Grove Longs Maven EX91

Mabyn was our attempt to recreate Saba by sire stacking Cordite on Schwarzee. While not another Saba as desired, Mabyn is nonetheless a quality doe with a smooth front end, deep/open/angular rib, level top line and flat rump. She has a very well attached mammary system that has height to the rear udder, smoothness to the foreudder, strong medial and teat placement.

Mabyn is bred to Mamoa on 9-19-24

32. Pleasant-Grove Frame Mayumi A2239889  
 LA 1-06 VG88 VVGE Born 2-1-22  
 DHIA 1-02 265d 2130M 3.3% 71F 3.2% 68P  
 2-00 275d 3515M 3.4% 120F 3.1% 110P (INC)

SS: +\*B SGCH Marran Rose's Rochester  
 S: \*B Pleasant Grove RR Freeze Frame  
 SD: CH Pleasant Grove Machine Fixed EX91

DS: ++\*B SG Sunshine Conit Schwarzee  
 D: CH Pleasant-Grove Schwarzee Mabel EX92  
 DD: CH Pleasant Grove Longs Maven EX91



Mabel gave me twin ai does by Frame in 2022, and there was no doubt that both would be staying right here! Mayumi hit the ground running as a milking yearling, with 1<sup>st</sup> place wins at both of her early club shows. She made the long trek to Oregon for Nationals, where she stood a very commendable 6<sup>th</sup> place milking yearling. Mayumi is the taller, more stylish of these twins, with a bit more 'presence' to her while having a more capacious udder. Mayumi was 10<sup>th</sup> place 2 year old at the '24 National Show. Mayumi is bred to Forge on 9-19-24

33. Pleasant-Grove Frame Mayu A2239888  
 LA 1-06 VG86 VVVV Born 2-1-22  
 DHIA 1-01 285d 2350M 3.2% 74F 3.3% 78P  
 2-00 273d 3075M 3.2% 98F 3.1% 94P (INC)

SS: +\*B SGCH Marran Rose's Rochester  
 S: \*B Pleasant Grove RR Freeze Frame  
 SD: CH Pleasant Grove Machine Fixed EX91

DS: ++\*B SG Sunshine Conit Schwarzee  
 D: CH Pleasant-Grove Schwarzee Mabel EX92  
 DD: CH Pleasant Grove Longs Maven EX91



Mayu was the fancier kid of these twins, winning the Feb kid class at the 2022 Iowa State Fair. She freshened just days before her sister this spring, and they are very similar, with bright futures. Mayumi is the more stylish doe right now, while Mayu is a touch smaller but with an equally well attached udder and wider flatter rump compared to Mayumi. Mayu placed 3<sup>rd</sup> in her only show of 2024. Mayu is bred to Joust on 8-25-24

## **\*\*2021 National Junior Champion\*\***

## **\*\*2 Time National Class Winner\*\***

34. CH Pleasant Grove Frame Mainline A2179683  
 LA 2-07 VG89 EVVE Born 1-17-21  
 DHIA 3-00 294d 3520M 3.2% 112F 3.3% 115P

SS: +\*B SGCH Marran Rose's Rochester  
 S: \*B Pleasant Grove RR Freeze Frame  
 SD: CH Pleasant Grove Machine Fixed EX91

DS: \*B Pleasant Grove Zen Machine  
 D: Pleasant Grove Midnite Machine EX90  
 DD: Pleasant Grove Oh So Many Sins EX91



Mainline is a 2-time National Class winner, being the 2021 National Jr. Champion as a Sr. Kid and following that up by winning the Sr. Yearling class at the 2022 National Show. She had a rough start to her milking career, freshening with a single premature kid and very little milk. Her production gradually increased over the summer. She appraised the max of VG89 for a first freshener in late summer. With a normal kidding, Mainline has lived up to expectations, easily finishing her Championship in 2024 and milking over 3500 lbs.

Mainline is bred to Sin City on 9-2-24



35. Pleasant Grove Wealthy Future A1950573  
 LA 4-06 EX90 EEEV Born 2-10-17  
 DHIA 3-11 305d 3280M 3.0% 99F 2.8% 93P  
 6-11 273d 2792M 3.2% 88F 2.7% 76P  
 SS: ++\*B Hoach's Lyric Liason  
 S: Loughlin's Back To The Future  
 SD: Loughlin's Fiona

DS: \*B Pleasant Grove Midas World  
 D: SGCH Pleasant Grove Worldly Wealth EX92  
 DD: Kickapoo Valley Saga Wafer EX90



Wealthy is our last daughter of Wealth, and reminds us so much of her. She is correct, with a nice leg set and superbly attached udder. Shown in 3 rings as a yearling, Wealthy was 1x2nd and 2x3rd in milking yearling classes of 12-14 head. She has matured beautifully, unfortunately she suffered an injury in 2022 and is now kept as a brood doe. She has proven her ability to transmit with an EX92 daughter that has a 4000 lb lactation. Wealthy is bred to Joust on 8-30-24

36. Pleasant Grove Marcos Moeta A2159980  
 LA 3-06 EX91 VEEE Born 2-20-20  
 DHIA 1-00 305d 2761M 3.2% 89F 3.1% 85P  
 2-11 305d 2620M 3.5% 93F 3.2% 85P  
 3-11 285d 3151M 3.6% 113F 3.0% 94 (INC)  
 SS: +\*B Willow Run GB Juan Carlos  
 S: Pleasant Grove Juan Marcos  
 SD: Pleasant Grove Long Milkdrop EX91

DS: Kickapoo Valley Illusional XXX  
 D: Pleasant Grove Framed Moana VG89  
 DD: Pleasant Grove Measured Sins EX90



We are excited to have this solid black doe in our herd, the first milking daughter of Marcos. She has an outstanding udder, with a beautifully shaped rear and near ideal teat placement. She also has deep, open, angular ribbing. She matured a lot this summer and now has an excellent appraisal score of 91. Moeta is bred to Match on 9-18-24

37. Pleasant Grove Machine Moeda A2288595  
 LA 1-07 FS84 AGGE Born 1-18-22  
 DHIA 1-01 278d 2415M 2.9% 71F 2.8% 68P  
 2-00 294d 3090M 2.6% 79F 2.8% 86P (INC)

SS: +\*B YBNVS Revolutionary Zen  
 S: Pleasant Grove Zen Machine  
 SD: SGCH Pleasant Grove Mafia Major EX92

DS: Kickapoo Valley Illusional XXX  
 D: Pleasant Grove Framed Moana VG89  
 DD: Pleasant Grove Measured Sins EX90



Dam: Pleasant Grove Framed Moana

Moeda is a very immature yearling with a lot of good parts, she just needs to grow into them. I'm sure that will come with maturity. Despite her overall immaturity, Moeda has an outstanding udder with nice height and width to the rear and ideal teat placement. Moeda is bred to Mamoa on 9-20-24



38. Pleasant Grove Frame Myddle A2229861  
 LA 2-06 VG88 VVEE Born 2-13-21  
 DHIA 1-11 305d 2446M 2.9% 71F 2.8% 68P  
 3-00 272d 3089M 2.8% 88F 2.8% 87P (INC)  
 SS: +\*B SGCH Marran Rose's Rochester  
 S: \*B Pleasant Grove RR Freeze Frame  
 SD: CH Pleasant Grove Machine Fixed EX91

DS: Kickapoo Valley Illusional XXX  
 D: Pleasant Grove Jam The Middle EX90  
 DD: Pleasant Grove Missing Sins VG87



A fancy, fancy udder on this pretty profile doe. 6x1st in 2022, as well as 11<sup>th</sup> place milking yearling at the 2022 National Show. We lost her dam last year, but are excited to have Myddle as a consolation. Myddle has matured a lot in the past year and I hope to get her back in the ring in 2025 to show off that beautiful udder and new found depth. Myddle is bred to Roman on 9-11-24

39. Pleasant Grove Future Method A2160054  
 LA 4-06 VG88 VEVV Born 2-8-17  
 DHIA 3-11 300d 3717M 3.8% 142F 3.2% 118P

SS: ++\*B Hoach's Lyric Liason  
 S: Loughlin's Back To The Future  
 SD: Loughlin's Fiona

DS: Pleasant Grove Zen Wingnut  
 D: Pleasant Grove Nutty Meteorite EX92  
 DD: Pleasant Grove Motion Meter VG89



We can't show them all, and Method is one that has a lot of quality but hasn't been shown. She has daughters in show herds in Indiana and Iowa, as well as a 2022 daughter that we retained. Method is bred to Mile on 8-30-24

40. CH Pleasant Grove Jam Metro A2165961  
 LA 3-07 EX91 EVEE Born 1-31-20  
 DHIA 1-00 248D 2470M 4.0% 97F 3.2% 78P  
 3-11 277d 2593M 3.4% 87F 3.2% 82P

SS: +\*B SGCH Marran Rose's Rochester  
 S: Pleasant Grove RR All Star Jam  
 SD: Pleasant-Grove Zorro Jamboree EX91

DS: Pleasant Grove Zen Wingnut  
 D: Pleasant Grove Nutty Meteorite EX92  
 DD: Pleasant Grove Motion Meter VG89



In 2022, I said "Metro is my 'Next year' goat. Correct, deep, and dairy, with a socked on udder." Well, she certainly lived up to my expectations: in 5 rings in 2023, Metro was 5x1st, 2xGCH, 2xRGCH, 1xBDIS to earn her permanent championship. Depth, power, smoothness, correct leg set, wide flat top line, and a beautifully attached udder with strong medial and ideal teat placement. Purely from a type standpoint, this may be one of the best does I've ever bred. Metro is F/F tested for Alpha Casein. Metro is bred to Joust on 8-28-24

41. CH Pleasant Grove Jam Metra A2288597

Metra is yet another high quality daughter

LA 1-07 VG86 VEVG Born 1-30-22  
DHIA 1-00 305D 1840M 3.3% 60F 3.2% 58P  
2-00 272d 2753M 3.5% 95F 3.1% 84P (INC)

SS: +\*B SGCH Marran Rose's Rochester  
S: Pleasant Grove RR All Star Jam  
SD: Pleasant-Grove Zorro Jamboree EX91

DS: Pleasant Grove Zen Wingnut  
D: Pleasant Grove Nutty Meteorite EX92  
DD: Pleasant Grove Motion Meter VG89

42. Pleasant Grove RR MilkMustache A2082550  
LA 5-07 EX91 EEEE Born 1-26-18  
DHIA 2-11 302d 3100M 3.3% 103F 2.8% 85P  
4-00 240d 2300M 3.5% 77F 2.8% 64P  
SS: ++\*B SG Sunshine Conina Condor  
S: SGCH +\*B Marran Rose's Rochester  
SD: CH Marran Rapture's Rose

DS: Pleasant Grove Amen Longitude  
D: Pleasant-Grove Long Milkshake EX90  
DD: CH Pleasant-Grove Midas Milkspot EX91

Mustache was a heavy producing 3 year old that made us smile every time she came in the parlor, but we didn't realize what we had until we clipped her up and took pictures. Unfortunately, a teat injury shortly after kidding at age 4 has affected her production and has kept us from being able to show her. Not super tall, but deep and wide with length of body and a well attached globular mammary. Strong medial and picture perfect teat placement.  
Mustache is bred to Sin City on 9-5-24

43. Pleasant Grove Ripple Meek A2125113  
LA 2-07 VG87 VVVV Born 1-26-19  
LA 4-07 EX92 EEEE  
DHIA 4-00 298d 2790M 3.6% 100F 2.9% 81P  
5-01 267d 2965M 3.3% 98F 2.8% 82P (INC)

SS: SGCH +\*B Marran Rose's Rochester  
S: Pleasant Grove RR Ripple  
SD: CH Pleasant Grove Live Report EX91

DS: \*B Kickapoo Valley Epic Falcon  
D: Pleasant-Grove Epic Mission  
DD: Pleasant-Grove PGL 664 Million EX90

If size is your thing, then Meek is not for you. But if you like moderate size with all around correctness that is hard to pick apart, Meek fits the bill. She excels in depth and width of body, as well as mammary attachment. I really need an updated picture of Meek, but you can see the quality in this yearling photo.  
Meek is bred to Roman on 9-21-24

of Meteorite, and full sister to Metro.  
There is so much potential in this young doe, with her structural correctness, strength and dairyness, and quality though immature udder. With some time to develop and mature, we believe that Metra will soon be as nice as her sister, Metro.

Metra is bred to Forge on 8-29-24





44. Pleasant Grove Seinfeld Mimosa A2165959  
 LA 3-06 EX91 VEEE Born 2-3-20  
 DHIA 1-11 298d 2947M 3.6% 104F 3.4% 99P  
 2-11 300d 3072M 3.3% 101F 3.2% 97P  
 3-11 297d 2880M 2.9% 83F 3.0% 87P (INC)  
 SS: Kickapoo Valley Sixpack  
 S: Mainstay KSP Seinfeld  
 SD: SG Sunshine Aries Seign

DS: \*B Kickapoo Valley Epic Falcon  
 D: Pleasant-Grove Epic Mission  
 DD: Pleasant-Grove PGL 664 Million EX90



Mimosa was a pretty yearling, a light reddish two tone chamoisee. It has been enjoyable to watch her develop these last couple years. In very limited showing, Mimosa was 1<sup>st</sup>/1<sup>st</sup> udder milking yearling at the Iowa State Fair, then 2<sup>nd</sup> place as both a 2 and 3 year old at the Iowa State Fair. We have kept 2 AI sons as herdsires. Alpha S1 Casein A/E  
 Mimosa is bred to Mile on 9-20-24

### **\*\*National Show 3<sup>rd</sup> Milking Yearling\*\***

45. Pleasant Grove Frame Mojito A2239890  
 LA 1-07 VG87 VVGE Born 1-23-22  
 DHIA 1-00 280d 2219M 3.5% 78F 2.9% 65P  
 2-00 295d 2860M 3.0% 85F 2.9% 83P (INC)  
 SS: +\*B SGCH Marran Rose's Rochester  
 S: Pleasant Grove RR Freeze Frame  
 SD: CH Pleasant Grove Machine Fixed EX91

DS: \*B Kickapoo Valley Epic Falcon  
 D: Pleasant-Grove Seinfeld Mimosa EX91  
 DD: Pleasant-Grove Epic Mission



Mojito was a fancy yearling that had a very good year in the showing in 2023. In early club shows, she was 4x1st milking yearling. She was then the 3<sup>rd</sup> place milking yearling at the ADGA National Show. I believe big things lie ahead once Mojito adds some maturity in both body and udder.  
 Mojito is bred Sin City on 8-29-24

46. Pleasant Grove WFM Midstream A2125116  
 LA 2-07 VG89 VEEE Born 1-24-19  
 DHIA 3-00 267d 3257M 3.5% 114F 2.9% 93P  
 5-00 300d 3545M 3.4% 121F 2.8% 99P (INC)  
 SS: \*B Windrush Farms Wonder Blizzard  
 S: \*B Windrush Farms Blizzard Manny  
 SD: Windrush Farms IRS Emily

DS: YBNVS Revolutionary Zen  
 D: Pleasant-Grove Zen Midpoint VG89  
 DD: Pleasant-Grove SSO Milk Glass VG89



Like the 4 previous does, Midstream also descends maternally from SGCH Pleasant Grove Super Mink EX91. Pictured as a yearling, we love the depth of chest, power, and smoothness of front end. She milks surprisingly well from a very well attached udder – over 3200 lbs each of the last 4 lactations.  
 Midstream is bred to Arch on 9-11-24

**\*\*Deceased – Reference Only\*\***

Pleasant Grove RR Matrix A1951081  
LA 3-05 EX92 EEEE Born 2-24-16  
LA 5-06 EX92 EEEE  
DHIA 4-11 305d 4125M 3.3% 137F 2.9% 119P  
SS: SG +\*B Sunshine Conina Condor  
S: +\*B SGCH Marran Rose's Rochester  
SD: CH Marran Rapture's Rose  
  
DS: CH Pleasant Grove Zen Wingnut  
D: CH Pleasant Grove Nutty Material EX91  
DD: Pleasant Grove Member Margie VG89



This doe persevered through a broken front leg as a kid, and was never shown as a result. Regardless, we were extremely happy with how Matrix turned out, from both a production and type aspect. And she has proven herself as a strong brood doe as well, with several strong type/production daughters and granddaughters currently in the herd. She left us with triplet doe kids as her parting gift to us.

47. Pleasant Grove WFM Materialize A2075047  
LA 3-05 EX90 VEEE Born 3-1-18  
LA 5-05 EX91 EEEE  
DHIA 2-10 305d 3361M 3.7% 123F 3.0% 100F  
3-10 264d 3047M 4.0% 121F 2.8% 84P  
5-10 296d 3640M 3.4% 125F 2.7% 100P  
SS: \*B Windrush Farms Wonder Blizzard  
S: \*B Windrush Farms Blizzard Manny  
SD: Windrush Farms IRS Emily  
  
DS: +\*B SGCH Marran Rose's Rochester  
D: Pleasant Grove RR Matrix EX92  
DD: CH Pleasant Grove Nutty Material EX91



We rarely keep dry yearlings, but felt this one had potential.... We are glad we did, and are so happy with everything about her that we decided to keep a son from Materialize in 2023. Shown a few times in 2021, Materialize was consistently 1<sup>st</sup> or 2<sup>nd</sup> while picking up several RGCH wins, as well as 1 GCH and BDIS win. Materialize was uneven in the udder in 2022 and 2023, so she wasn't shown. Unable to get her udder balance out enough to show, Materialize remains as a brood doe and for the consistent production she provides.

Materialize is bred to Mile on 8-29-24

48. Pleasant Grove Frame Mixture A2229862  
LA 2-07 FS84 GVGG Born 1-24-21  
DHIA 2-00 288d 3328M 3.2% 108F 2.6% 88P  
3-00 294d 4766M 2.8% 132F 2.4% 115P  
SS: +\*B SGCH Marran Rose's Rochester  
S: Pleasant Grove RR Freeze Frame  
SD: CH Pleasant Grove Machine Fixed EX91  
  
DS: \*B Windrush Farms Blizzard Manny  
D: Pleasant Grove WFM Materialize EX90  
DD: Pleasant Grove RR Matrix EX92





Mixture is a large framed young doe that puts everything in to making milk. She is angular, dairy and long, with a quality mammary showing nice RU height, medial strength, and teat placement. Pictured in early summer as a 2 year old, Mixture is still immature, and her appraisal score reflects that immaturity. While we wait for the physical maturity, we are loving the production from Mixture – over 3300 lbs as a 2 year old followed by 4800 lbs as a 3 year old. Mixture is bred to MicDrop on 9-5-24

49. Pleasant Grove Burn Mixtape A2326528  
 Not Appraised Born 2-13-22  
 DHIA 1-00 278d 2252M 3.0% 68F 2.9% 65P  
 1-11 297d 3665M 2.9% 108F 3.1% 112P  
 SS: \*B McCann Farm HWK Kneville  
 S: Canter-Vine MFK Auburn  
 SD: GCH Kara Kahl Sirius Aurora EX91  
  
 DS: Pleasant Grove RR Freeze Frame  
 D: Pleasant Grove Frame Mixture  
 DD: Pleasant Grove WFM Materialize EX90

Mixtape is a fancy young doe loaded with potential. I love her length of neck, smoothness of blending in the shoulder, and levelness of her top line. She is deep and angular in the rib, and stands on a strong set of legs. Her udder is beautifully shaped with a wide rear udder, snug fore udder, strong medial suspensory ligament and near ideal teat placement.

Mixtape is bred to Service on 9-20-24

50. Pleasant Grove WFM Matisse A2224692  
 LA 2-07 VG85 VVVG Born 1-24-21  
 DHIA 1-01 263d 2190M 3.3% 73F 3.2% 69P  
 2-00 305d 2200M 3.8% 84F 3.1% 69P  
 SS: \*B Windrush Farms Wonder Blizzard  
 S: \*B Windrush Farms Blizzard Manny  
 SD: Windrush Farms IRS Emily  
  
 DS: +\*B SGCH Marran Rose's Rochester  
 D: Pleasant Grove RR Matrix EX92  
 DD: CH Pleasant Grove Nutty Material EX91



Matisse is a full sister to Materialize, and basically a carbon copy: level topline, width of chest, long dairy neck, smooth shoulders, and a correct leg set. Very excited to watch this one develop! Matisse is bred to Mile on 9-2-23

51. Pleasant Grove Nutty Motto A2184522  
 LA 2-06 VG89 VVVE Born 2-2-21  
 DHIA 2-00 305d 2885M 2.6% 75F 3.1% 90P  
 3-00 292d 4098M 2.4% 99F 3.0% 124P  
  
 SS: \*B YBNVS Revolutionary Zen  
 S: CH Pleasant Grove Zen Wingnut  
 SD: SGCH Kickapoo Valley Saga Whimper EX92  
  
 DS: Pleasant Grove RR Freeze Frame  
 D: Pleasant Grove Frame Motif EX90  
 DD: CH Pleasant Grove Nutty Material EX91



Pleasant Grove Nutty Motto

Motto has matured and filled out nicely, and we finally got her out to show this year as a 3 year old. She was 1<sup>st</sup>/1<sup>st</sup> udder at the Iowa State Fair, and was also part of the 1<sup>st</sup> place M/D, Produce of Doe, and Dairy Herd groups. Motto is the dam of our 2023 Iowa State Fair BJrDIS. Motto is bred Milemarker on 11-3-24

52. Pleasant Grove Long Motor A2326521  
Not Appraised Born 2-3-23  
DHIA 1-00 273d 2284M 3.1% 71F 2.9% 67P

SS: Pleasant Grove Act Menacing  
S: Pleasant Grove Amen Longitude  
SD: SGCH Pleasant Grove SSO Length EX92

DS: CH Pleasant Grove Zen Wingnut  
D: Pleasant Grove Nutty Motto VG89  
DD: Pleasant Grove Frame Motif EX90



Pleasant Grove Long Motor

We are glad to have a Longitude daughter back in the herd. Motor started her show career with a JrGCH/BDIS win at the 2023 Iowa State Fair. She freshened with a shapely and well attached udder, just what we would expect from Longitude. Motor is long-necked, smooth and dairy, open ribbed, and stands on correct feet and legs. Motor was 3<sup>rd</sup> milking yearling at the 2024 Iowa State Fair. Motor is bred AI to Willow Run Good James Jazz on 8-30-24

53. Pleasant Grove Nutty Motive A2184521  
LA 2-06 VG85 GVGVBorn 2-2-21  
DHIA 2-00 305d 3260M 2.3% 76F 2.9% 94P  
3-00 293d 4656M 2.0% 93F 2.8% 130P

SS: \*B YBNVS Revolutionary Zen  
S: CH Pleasant Grove Zen Wingnut  
SD: SGCH Kickapoo Valley Saga Whimper EX92

DS: Pleasant Grove RR Freeze Frame  
D: Pleasant Grove Frame Motif EX90  
DD: CH Pleasant Grove Nutty Material EX91



Pleasant Grove Nutty Motive – yearling pic

Motive is the littermate to Motto. She is maturing nicely, but is really all about milk production right now. Tall, wide, and powerful, she uses that strength to milk – 3200 lbs last year and over 4600 lbs this year. Motive is bred to Mojo on 8-31-24

54. Pleasant Grove Atlas Motivates A2326516  
Not Appraised Born 1-31-23  
DHIA 1-02 225d 1850M 2.4% 44F 3.0% 56P (INC)

SS: Sand-Dance HLS Rico Suave  
S: \*B Willow Run Rico Atlas  
SD: SGCH Maple Glen Classic's Angela

DS: Pleasant Grove RR Freeze Frame  
D: Pleasant Grove Frame Motif EX90  
DD: CH Pleasant Grove Nutty Material EX91



Maternal sister to Motto and paternal sister to Myuna equals excitement! Motivates was 1<sup>st</sup>/1<sup>st</sup> udder milking yearling at the 2024 Iowa State Fair, and 1<sup>st</sup> place Produce of doe with Motto. Breeding Motto to Longitude worked out really well, so we decided to do the same with Motivates..... Motivates is bred AI to Pleasant Grove Amen Longitude on 9-9-24



55. Pleasant Grove Laser Montage A2040311  
 LA 4-06 VG89 VVEE Born 2-24-19  
 DHIA 3-11 286d 2909M 3.2% 93F 3.1% 91P  
 4-11 289d 3120M 3.1% 97F 3.3% 102P

SS: SG Sweet Dreams Golden Boy  
 S: \*B Hoach's Golden Laser  
 SD: GCH Hoach's QAAG Goldenlark

DS: Loughlin's Back To The Future  
 D: Pleasant Grove Future Monitor EX91  
 DD: Pleasant Grove Mosaic Moniker EX91



Easily our favorite yearling in 2020, one of those hold your breath yearlings.... Unfortunately, there were no shows due to Covid in 2020 and then Montage kidded with a single doe and no milk in 2021, and was excused from appraisal. With a normal kidding, and multiples, in 2022 our excitement returned. However, being in a 300 head commercial dairy and not being worked with for 2 years, Montage decided she didn't like being lead. I finally felt like she was trained by the end of summer and took her to the Iowa State Fair. Montage did not like the new environment of the fair and refused to lead. Despite her stubbornness, she did place 3<sup>rd</sup> with 1<sup>st</sup> udder in a large competitive 3 year old class. Montage is bred to Mile on 8-29-24

56. CH Pleasant Grove MFM Monika A2320228  
 LA 1-07 VG85 VGAV Born 1-25-22  
 DHIA 1-01 288d 1920M 2.9% 56F 3.1% 59P  
 2-00 305d 4055M 3.0% 120F 3.1% 121P

SS: ++\*B SG Kickapoo Valley Proud Hawkeye  
 S: \*B McCann Farm HWK Maelstrom  
 SD: SGCH McCann Farm Fern EX92

DS: Loughlin's Back To The Future  
 D: Pleasant Grove Future Monitor EX91  
 DD: Pleasant Grove Mosaic Moniker EX91



Monika was a promising though immature yearling. Quite correct structurally, she just needs some time to deepen out and mature. This maternal line tends to mature slowly, look their best as 5 to 6 year olds, and age gracefully as evidenced by Monika's granddam appraising EX91 at age 8-05. Monika's length of body, levelness, and beautiful udder, with height and width of RU as well as excellent teat placement helped her earn all 3 legs toward permanent Champion status and place 14<sup>th</sup> place at Nationals. Monika is bred to Arch on 9-11-24

57. CH Pleasant Grove Xerox Meantime A1905505  
 LA 3-03 EX91 VEEE 6-05 EX92 VEEE Born 3-10-15  
 DHIA 5-11 280d 4156M 3.7% 155F 3.3% 136P  
 6-10 305d 3670M 3.8% 140F 3.5% 129P  
 8-10 291d 4420M 4.2% 184F 3.2% 143P

SS: \*B CH Nodaway Must Be Fate  
 S: \*B Kara Kahl Fate Be Xeroxed  
 SD: GCH Pleasant Grove Zen Xercise EX91

DS: Pleasant Grove Amen Longitude  
 D: Pleasant Grove Long Meander EX90  
 DD: Pleasant Grove XXX Murky



I blinked and Meantime went from promising young doe to beautiful mature animal. Structurally, she has a well attached udder (one of the longest FU in the herd), excellent front end assembly with a deep wide chest, and open angular rib. We would like to see a bit more levelness from hips to pins, but that's minor to us at this point. Meantime is believed to be A/F for AS-1 Casein, based on testing of offspring. Her best records are 4000+ lb lactations, and she topped 3600 lbs as a 7 year old, and blew us away with well over 4000 lbs as a 9 yr old this year. In limited showing, Meantime has earned permanent CH status and a couple BUIS. 6<sup>th</sup> place Aged doe at the 2024 National Show. Meantime is bred to Mamoa on 11-1-24

58. Pleasant Grove Framed Media A2094911  
 LA 2-06 VG89 VVVE Born 2-9-19  
 LA 4-06 EX91 EEEE  
 DHIA 3-00 269d 3240M 2.6% 84F 2.7% 88P  
 4-00 273d 3515M 2.9% 103F 2.6% 92P  
 4-11 287d 3642M 2.9% 104F 2.7% 97P  
 SS: +\*B SGCH Marran Rose's Rochester  
 S: \*B Pleasant Grove RR Freeze Frame  
 SD: CH Pleasant Grove Machine Fixed EX91  
  
 DS: \*B Kara Kahl Fate Be Xeroxed  
 D: Pleasant Grove Xerox Meantime EX91  
 DD: Pleasant Grove Long Meander EX90



This picture of Media does not do her justice, as it was her first time being led or set up. Regardless, we love her strength and smoothness of front end, dairyness, and length. She also has an exceptionally high rear udder. I really need an updated picture of Media. Media is bred to MicDrop on 8-30-24

59. Pleasant-Grove Marco Directive A2224701  
 LA 2-07 VG89 VVVE Born 1-14-21  
 DHIA 1-00 279d 2529M 2.8% 70F 2.8% 71P  
 2-00 288d 3371M 2.8% 93F 2.8% 95P  
 3-00 265d 4552M 2.7% 124 2.8% 126P  
  
 SS: +\*B Willow Run GB Juan Carlos  
 S: Pleasant Grove Juan Marcos  
 SD: Pleasant Grove Long Milkdrop EX91  
  
 S: Pleasant Grove RR Freeze Frame  
 D: Pleasant Grove Frame Direction EX90  
 DD: Pleasant Grove Jahveh Director EX92



Maturing nicely as a 3 year old, there is not much I can pick apart about Directive; she is milking like her dam and granddam, and looks like she is going to be a lot of fun to show in the coming years. Shown 5 times in 2023, Directive was 2x1st, 3x2nd, 1xRGCH. 2024 shows – 3x1st, 3x2nd, 1xRGCH. She really knows her job in the parlor as well, increasing production every year and milking nearly 4800 lbs this year as a 3 year old. Directive is bred to Joust on 8-27-24

60. Pleasant-Grove Jam Derecho A2159944  
 LA 3-06 EX90 EEEV Born 2-19-20  
 DHIA 2-11 268d 2967M 3.3% 97F 3.3% 97P

Not shown and often overlooked because of our many Excellent same age does, Derecho is none the less a quality doe. She exhibits a



3-11 267d 3562M 3.1% 109F 3.1% 111P

SS: +\*B SGCH Marran Rose's Rochester  
S: Pleasant Grove RR All Star Jam  
SD: CH Pleasant Grove Zorro Jamboree EX91

S: +\*B Willow Run Elijah Jahveh  
D: Pleasant Grove Jahveh Director EX92  
DD: Pleasant Grove Nilan Direct EX91

61. Pleasant Grove Sip O'Moonshine A1924380  
LA 4-02 VG89 VEEV 7-04 VG88 VVVV Born 4-1-14  
DHIA 6-09 277d 2284M 3.4% 78F 3.1% 71P

SS: Pleasant Grove Zen Wingnut  
S: Pleasant Grove Nutty Moonshine  
SD: SG Pleasant Grove SSO Miracle EX91

DS: Pleasant-Grove Hans Mentor  
D: Pleasant Grove Ment Snicker VG89  
DD: Pleasant Grove Coy Snub

Sip is a well put together doe that knows how to make fancy daughters. She is an angular, deep bodied doe with a nice wide rump that supports a well attached udder. Pictured above is her daughter that was shown twice in the dry yearling class in 2019, winning GCH in both rings and BDIS in one ring. Sip has held up extremely well as she approaches her 11<sup>th</sup> birthday, and has many descendants in the herd. Sip is bred to Joust on 8-30-24

lot of Strength and Dairyness and stands on correctly set legs to go along with a high quality mammary. It is a well shaped udder, with a strong medial and near ideal teat placement. With generations of Excellent dams and longevity behind her, I look forward to the continued maturation of Derecho.

Derecho is bred to Mile on 8-29-24



Sip dau: Pleasant Grove Frame Size

62. **Pleasant Grove Jam Siesta** A2117722  
LA 2-06 EX91 EEEE Born 2-28-19  
LA 4-06 EX92 EEEE  
DHIA 1-10 305d 5290M 3.6% 194F 2.8% 145P  
2-11 294d 4020M 3.5% 142F 2.8% 117P  
3-11 287d 4023M 3.5% 141F 2.7% 107P  
4-11 288d 4645M 3.6% 166F 2.6% 123P  
SS: +\*B SGCH Marran Rose's Rochester  
S: Pleasant Grove RR All Star Jam  
SD: CH Pleasant Grove Zorro Jamboree EX91  
  
DS: Pleasant Grove RR Freeze Frame  
D: Pleasant Grove Framed Sienna VG89  
DD: Pleasant Grove Sip O'Moonshine VG89



I'm really glad I decided to keep this doe kid despite both parents being yearlings. Siesta came in on fire as a second freshening 2 year old, demonstrating power in the front end, width throughout, and an outstanding productive udder. She milks like she looks.... She finished with over a 5000 pound milk record as a 2 year old, followed it up with a 4000 plus pound lactation as both a 3 and 4 year old, and is on her way to a 4700+ lb lactation this year. She also appraised EX92 in 2023. She has been 4x1st, 1xGCH/BOB, 1x RGCH in limited showing. Siesta is bred to Sin City on 8-30-24

63. Pleasant Grove Mono Siete A2224699  
 LA 2-07 EX90 VEEE Born 1-24-21  
 DHIA 1-01 285d 2410M 3.7% 88F 3.1% 74P  
 2-00 305d 2770M 3.4% 94F 3.0% 84P  
 3-00 299d 4230M 3.2% 136F 2.8% 120P

SS: \*B Hoach's Golden Laser  
 S: Pleasant-Grove Laser Monolith  
 SD: Pleasant-Grove Future Monitor EX91

DS: Pleasant Grove RR All Star Jam  
 D: Pleasant Grove Jam Siesta EX92  
 DD: Pleasant Grove Framed Sienna VG89



Siete is the first daughter of Siesta, and we like what we see. Long neck, smooth front end, correct leg set, and a well attached udder. Siesta's production has carried through as well, with Siete making a 3<sup>rd</sup> straight lactation over 3.4% BF and knocking on the door of 4000 lbs this year. Siete is bred to Joust on 8-30-24

64. Pleasant Grove Milemarker Seis A2326002  
 LA 1-05 VG89 VVVE Born 3-5-22  
 DHIA 1-00 248d 2203M 3.5% 77F 3.2% 70P  
 2-00 239d 1780M 3.6% 64F 3.2% 57P (INC)  
 SS: +\*B Pleasant Grove Super Standout  
 S: Pleasant-Grove SSO Milemarker  
 SD: Pleasant-Grove Frame Myina EX91

DS: Pleasant-Grove Laser Monolith  
 D: Pleasant Grove Mono Siete EX90  
 DD: Pleasant Grove Jam Siesta EX92



A rather unassuming kid that freshened this past spring with a knockout yearling udder, Seis has given us our first indication of what Milemarker can do. Beautiful udder shape, height and width of rear, smooth fore udder, strength of medial and teat placement that doesn't get any better. Seis also has depth and width of chest, a deep and angular rib, level top line and very nice set to the leg. We kept her hidden in the barn this year, but look forward to getting her in the showing in the coming years and watching her mature.

Seis is bred to Mathias on 9-12-24

65. CH Pleasant Grove JT Salsa A2224697  
 LA 2-07 EX90 VEEE Born 1-22-21  
 DHIA 1-00 305d 2420M 3.3% 81F 3.0% 72P  
 2-00 305d 3524M 3.5% 124F 2.9% 102P  
 EXT 637d 6940M 3.4% 235F 3.1% 204P  
 SS: \*B Loughlin's Back To The Future  
 S: Pleasant Grove Future Jailtime  
 SD: Pleasant Grove Amen I'm Jammin EX91

DS: Pleasant Grove RR Freeze Frame  
 D: Pleasant Grove Framed Sienna VG89  
 DD: Pleasant Grove Sip O'Moonshine VG89





In fall of 2022, I said Salsa is my “next year” goat. She did not disappoint, earning 2 legs towards permanent champion status while winning 2xGCH and 4xRGCH in 2023. She also placed 7<sup>th</sup> in a very competitive 2 year old class at the National Show. We also saw a nice bump in production as a 2 year old, as Salsa made over 3500 lbs in 305 days. Salsa was milked through last year, so was only shown once in 2024. She made it count though, winning GCH/BOB/BDIS to finish her Champion status. Salsa is bred to Sin City on 9-2-24

66. Pleasant Grove Lovin Thy Frame A2117708  
 LA 2-06 EX90 VVEE Born 2-27-19  
 DHIA 1-11 305d 3346M 3.5% 118F 2.9% 96P  
 3-00 610d 5783M 3.3% 192F 2.9% 168P  
 4-11 293d 4290M 3.3% 140F 2.6% 112P

SS: +\*B SGCH Marran Rose's Rochester  
 S: Pleasant Grove RR Freeze Frame  
 SD: CH Pleasant Grove Machine Fixed EX91

DS: Willow Run Ambassador Chevalier  
 D: Pleasant Grove Cheval Lively  
 DD: Pleasant Grove Dream Living



Lovin has really developed since this picture as a yearling. She is now a large framed 5 year old with a lot of width and strength, showing tremendous depth and spring of rear rib. She has an outstanding udder, being high and wide in the rear with a strong medial and near ideal teat placement. I really need to get a new picture of Lovin. Production is outstanding, as she made over 4000 lbs this lactation after an extended lactation that nearly hit 6000 lbs.

Lovin is bred to Mile on 9-22-24

67. Pleasant Grove Jam Lovina A2224696  
 LA 2-06 VG88 VVVE Born 2-15-21  
 DHIA 0-11 278d 2947M 3.6% 105F 3.1% 92P  
 1-11 305d 3430M 3.4% 116F 3.3% 114P  
 3-00 253d 3664M 3.5% 127F 3.2% 118P (INC)

SS: +\*B SGCH Marran Rose's Rochester  
 S: Pleasant Grove RR All Star jam  
 SD: CH Pleasant Grove Zorro Jamboree EX91

DS: Pleasant Grove RR Freeze Frame  
 D: Pleasant Grove Lovin Thy Frame EX90  
 DD: Pleasant Grove Cheval Lively



I love a yearling that freshens with so much potential, and that signature “Pleasant Grove udder” – beautiful globular shape, strong medial, ideal teat placement, high RU, and smooth FU. Lovina has matured a lot this year as a 3 yr old, finally gaining the depth of heart and rib we expected, and is milking like her pedigree said she would.

Lovina is bred to Mamoa on 9-20-24

68. Pleasant Grove Likely 2 Resist A2028336  
 LA 3-05 VG89 VVEE Born 3-12-18  
 LA 5-05 VG89 VEVE  
 DHIA 2-11 261d 2839M 3.6% 101F 3.1% 88P  
 3-10 263d 2525M 3.3% 84F 3.1% 79P  
 SS: Willow Run Ambassador Chevalier  
 S: Pleasant Grove Cheval Likely  
 SD: Pleasant Grove Dream Living

DS: Loughlin's Back To The Future  
 D: Pleasant Grove Future Rent VG88  
 DD: Pleasant Grove 4 Sins I Repent EX91



Dam: Pleasant Grove Future Rent VG88

Resist is a doe that has really matured this year. She has always had a beautiful udder – smooth FU, high RU, strong medial, and ideal teat size/shape/placement. This year she added some nice depth and filled out. She is really starting to look like her dam, right down to the color. I believe she is the kind of doe that is going to last a long time.

Resist is bred to MicDrop on 9-17-24

69. Pleasant Grove Epic Rendition A2094908  
 LA 4-07 EX91 EEVE Born 1-26-19  
 DHIA 2-00 289d 2924M 3.4% 99F 2.7% 80P  
 5-00 295d 2807M 2.7% 76F 2.6% 74P

SS: SG Chateau De Ville's Gyrfalcon  
 S: \*B Kickapoo Valley Epic Falcon  
 SD: SGCH Kickapoo Valley Saga Zealot EX92

DS: Loughlin's Back To The Future  
 D: Pleasant Grove Future Rent VG88  
 DD: Pleasant Grove 4 Sins I Repent EX91



A very tall and long young doe with all the right parts in all the right places, Rendition has finally filled out her large lanky frame late this year. Globular udder with perfect teat placement and strong attachment. Now past her gangly growing stage, I think I'll finally get Rendition in the show ring in 2025. Rendition is bred to Joust on 9-5-24

70. Pleasant Grove Jam Rendezvous A2224705  
 LA 2-07 EX91 EEEE Born 2-13-21  
 DHIA 1-00 300d 2700M 2.6% 72F 2.8% 79P  
 2-00 289d 3130M 2.7% 84F 2.7% 83P  
 2-11 296d 4370M 2.5% 110F 2.7% 120P  
 SS: +\*B SGCH Marran Rose's Rochester  
 S: Pleasant Grove RR All Star Jam  
 SD: CH Pleasant Grove Zorro Jamboree EX91

DS: \*B Kickapoo Valley Epic Falcon  
 D: Pleasant Grove Epic Rendition EX91  
 DD: Pleasant Grove Future Rent VG88



Similar to her dam, Rendezvous is tall and long, but a bit gangly as a young doe. I believe she just needs time to fill out her frame and then we'll have some fun at shows goat! She's almost there, adding significant depth and maturity this year. She has a beautifully shaped, well attached, highly productive udder with strong medial and teat placement. 1x1st, 1x2nd, 2x5th (she didn't fill for those 2 rings).

Rendezvous is bred to Joust on 9-17-24



71. Pleasant-Grove Future Rumble A2094910  
 LA 2-07 EX90 VEEE Born 1-26-19  
 LA 4-07 VG89 VEEV  
 DHIA 2-00 288d 3666M 3.1% 115F 3.1% 115P  
 5-00 256d 3272M 2.6% 86F 3.1% 101P (INC)  
 SS: ++\*B Hoach's Lyric Liason  
 S: Loughlin's Back To The Future  
 SD: Loughlin's Fiona

DS: \*B Pleasant Grove Mark Of Reno  
 D: Pleasant-Grove Mark A Ruler  
 DD: Pleasant-Grove Zen Rulers



Rumble was a fancy yearling that caught our eye first because of her color, but then also because of her correctness. She has a long neck, long body, and level top line, coupled with an outstanding udder. Pictured as a yearling, Rumble has developed into a powerful deep bodied mature doe.

Rumble is bred to Roman on 8-29-24

72. Pleasant-Grove Frame Rust A2229860  
 LA 2-07 VG87 GVVE Born 1-22-21  
 DHIA 2-00 299d 2960M 3.9% 114F 3.1% 92P  
 3-00 277d 3245M 3.4% 111F 2.9% 94P  
 SS: +\*B SGCH Marran Rose's Rochester  
 S: Pleasant Grove RR Freeze Frame  
 SD: CH Pleasant Grove Machine Fixed EX91

DS: \*B Kara Kahl Fate Be Xeroxed  
 D: Pleasant-Grove Xerox Runway  
 DD: Pleasant-Grove Nutty Ruling EX91



Rust is a typical Frame daughter, tall and long, extremely dairy, with a well attached highly productive mammary system. She has one of the widest/flattest rumps in the herd, and very good shoulders.

Rust is bred to Roman on 9-2-24

73. Pleasant Grove Roman Rustler A2370947  
 Not Appraised Born 2-14-23  
 DHIA 1-00 267d 2860M 3.2% 91F 3.1% 89P (INC)

SS: +\*B GCH Redwood Hills Sunshine Reverie  
 S: Pleasant Grove Reverie Roman  
 SD: Pleasant Grove Future Risotto EX91

DS: Pleasant Grove RR Freeze Frame  
 D: Pleasant Grove Frame Rust VG87  
 DD: Pleasant Grove Xerox Runway



Rustler is a fancy eye-catching yearling that I don't think I would change even if I could. Age appropriate maturity, long lean neck, prominent brisket, squarely set legs, open angular ribs, level top line and wide flat rump. And I haven't even got to the udder, which is globular shaped, high/wide in the rear, strong medial/teat placement, and a smooth nicely extended fore udder. Shown 7 times this summer, she was 4 x 1<sup>st</sup>, 2x2<sup>nd</sup> (the 1<sup>st</sup> place doe was also 1<sup>st</sup> at Nationals), and 1x7<sup>th</sup> (National Show).

Rustler is bred to Sin City on 8-30-24

74. Kara Kahl Framed Arlene A2174532  
 LA 2-04 VG85 GGTV Born 4-2-21  
 DHIA 0-10 239d 2360M 3.0% 71F 3.0% 71P  
 1-09 305d 2386M 3.2% 76F 3.0% 71P  
 2-10 289d 2995M 3.1% 92F 2.9% 86P

SS: ++\*B SGCH Marran Rose's Rochester  
 S: Pleasant Grove RR RR Freeze Frame  
 SD: CH Pleasant Grove Machine Fixed EX91

DS: +B Pleasant Grove Super Saga  
 D: Kara Kahl Saga Arwyn EX91  
 DD: GCH Kara Kahl PGL Arugula EX91



It's not often that we add an outside doe to our herd, but when Arlene was offered, I couldn't resist as I was actually considering ordering a buck from her. And with a pedigree of 3 straight generations of Pleasant Grove sires, we weren't really adding an outside doe but rather known genetics. And talk about a stacked pedigree on Arlene... her sire and both grandsires are all ADGA National Premier Sires, while her dam is a maternal sister to the 2021 National Champion. Arlene is the largest doe in the barn, deep and wide in the chest, with a pleasing and productive mammary system. I bred Arlene specifically to Milemarker in order to keep a son – a potential buck that would be line bred on both Freeze Frame and SGCH Stardust Cordite Saba EX93. Arlene actually went down with pregnancy toxemia last spring, dropping a set of quads over a week early. We managed to save 1 buck and 1 doe kid, but the result was a tough year for Arlene, reflected in both her lower production and relatively low appraisal score. The pregnancy toxemia had a permanent effect on Arlene so I don't think she'll ever reach her full potential, but she'll be kept as a brood doe. We are VERY impressed by her Milemarker milking yearling daughter.

Arlene is bred to Mile on 9-6-24

75. Pleasant Grove What A Frame A2180309  
 LA 2-07 VG89 VEVV Born 1-24-21  
 DHIA 1-00 304d 2490M 3.5% 88F 3.6% 90P  
 2-01 294d 3430M 3.6% 123F 3.5% 121P  
 3-00 293d 4400M 3.5% 153F 3.6% 157P

SS: +\*B SGCH Marran Rose's Rochester  
 S: Pleasant Grove RR Freeze Frame  
 SD: CH Pleasant Grove Machine Fixed EX91

DS: Pleasant Grove Future Epic Worth  
 D: Pleasant Grove Worth A Wager  
 DD: Pleasant Grove Whatup in Reno EX90



What was a fancy, eye-catching kid that placed 2<sup>nd</sup> in the Senior Kid class at the 2021 National Show, as well as part of the 1<sup>st</sup> place Junior Get of Sire. She freshened with a well attached udder, and typical of the Frame daughters, started filling the milk pail. After a solid 2500 lb yearling lactation, and 3400 lbs as a 2 year old, she'll be solidly over 4400 lbs of 3.5% component milk in 2024. I love the width throughout on What, especially in the rump. What is also a very dairy and angular individual. Alpha S1 Casein A/E

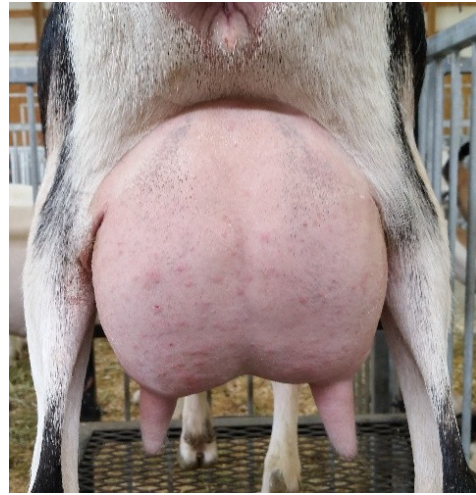
What is bred to Mathias on 8-30-24



76. Pleasant Grove Epic Vibes A2078920  
LA 5-06 EX90 EEEV Born 2-3-18  
DHIA 4-11 288d 3250M 2.9% 95F 3.1% 101P  
5-11 297d 2626M 3.8% 100F 3.1% 81P

SS: +\*B SG Chateau De Ville's Gyr Falcon  
S: \*B Kickapoo Valley Epic Falcon  
SD: SGCH Kickapoo Valley Saga Zealot EX92

DS: Pleasant Grove Longshot 2 Live  
D: Pleasant Grove Live Visible EX91  
DD: Pleasant Grove SSO Vestia



Vibes is a quality doe that fits perfectly in the commercial dairy; she is correct, problem free, and consistently makes profitable lactations without really being noticed. She is a valued brood doe, with an EX90 daughter that also consistently makes profitable lactations, a fancy milking yearling that I believe is going to make some noise in the show ring as well as milk well, and a fancy dry yearling that was 5<sup>th</sup> place at the 2024 National Show.

Vibes is bred to Forge on 8-29-24

77. Pleasant Grove Vital Jam A2125110  
LA 4-06 EX90 VEEE Born 2-28-19  
DHIA 3-11 267d 3007M 3.6% 108F 3.0% 89P  
4-11 289D 2957M 3.2% 95F 3.0% 88P

SS: SGCH ++\*B Marran Rose's Rochester  
S: Pleasant-Grove RR All Star Jam  
SD: CH Pleasant-Grove Zorro Jamboree EX91

DS: \*B Kickapoo Valley Epic Falcon  
D: Pleasant Grove Rpic Vibes EX90  
DD: Pleasant Grove Live Visible EX91

I wish I had gotten a picture of Vital, as she is a pretty doe with a lot of good qualities. She is strong and wide in the chest, smooth and tight in the shoulder, and some of the most open ribs in the herd. She is level over the top, with a wide flat rump. Her udder is beautifully attached with a high wide arch, smooth FU, strong medial and excellent teat placement. Production is strong though not extreme, with excellent components.

Vital is bred to Joust on 8-27-24

78. Pleasant Grove MFM Vintage A2388839  
Not Appraised Born 1-28-23  
DHIA 1-02 224d 2453M 3.1% 77F 3.1% 75P (INC)

SS: ++\*B SG Kickapoo Valley Proud Hawkeye  
S: \*B McCann Farm HWK Maelstrom  
SD: SGCH McCann Farm Fern EX92

DS: \*B Kickapoo Valley Epic Falcon  
D: Pleasant Grove Rpic Vibes EX90  
DD: Pleasant Grove Live Visible EX91



Pretty excited about this yearling. Tall and long with age appropriate maturity. She has nice depth and width to her chest, a smooth shoulder, angular rib, and a long level top line and rump. She has a beautiful udder – high and wide in the rear with nice arch and near ideal teat placement. Vintage was only shown once this summer, but topped her class of 5 milking yearlings. She has also shown a strong will to milk, currently projected to over 2800 lbs as a yearling.

Vintage is bred to Joust on 8-29-24

79. Pleasant Grove Marcos Menus A2370938  
Not Appraised Born 1-28-23  
DHIA 1-00 273d 2161M 2.7% 59F 3.1% 67P (INC)

SS: ++\*B Willow Run GB Juan Carlos  
S: Pleasant Grove Juan Marcos  
SD: Pleasant Grove Long Milkdrop EX91

DS: Kara Kahl Fate Be Xeroxed  
D: CH Pleasant-Grove Xerox The Menu EX91  
DD: Pleasant-Grove Act Minuet EX90



I see a lot of potential in this promising yearling. She is so smooth, long and dairy, just needs time to mature. Her udder is excellent, with a snug FU, nicely arched RU, strong medial and outstanding teat placement. Shown 6 times this summer in the same 6 rings that Rustler and the National Class winner were in, Menus was 2x3rd, 3x4th, and 1x5th. Menus comes from the same maternal line as our Herd Sire, Mathias, as they share a maternal great-granddam. Menus is bred to Mathias on 8-30-24

## 2024 Alpine Herd Sires

1. Pleasant-Grove RR Mathias A1924384  
\*\*DNA\*\* LA EX90 Born 1-27-18

SS: SG +\*B Sunshine Conina Condor  
S: SGCH ++\*B Marran Rose's Rochester  
SD: CH Marran Rapture's Rose

DS: YBNVS Revolutionary Zen  
D: CH Pleasant-Grove Zen Mirabell EX92  
DD: Pleasant-Grove SSO Miracle EX91



Pictured is Mathias' dam at age 4. Mathias is a well proven buck that we originally sold as a kid. He went on to become an USDA Elite buck for several years. We were given the opportunity to bring him back home this year, and are happy to be able to utilize his genetics despite his advancing age. Mathias is a deep and powerful buck in the style of his sire, Rochester. Like his sire, Mathias makes tall, long, wide and level daughters. Like his dam, he makes very high and wide rear udders with close teat placement. He is plus proven for milk and BF%, and carries the A allele for casein and high protein production. Mathias was used on some of our best does this fall. Alpha S1 casein A/E



2. Pleasant-Grove Jam **MicDrop** A2145568  
Born 3-14-20

SS: SGCH ++\*B Marran Rose's Rochester  
S: Pleasant-Grove RR All Star Jam  
SD: CH Pleasant-Grove Zorro Jamboree EX91

DS: Pleasant Grove Amen Longitude  
D: Pleasant-Grove Long Milkdrop EX91  
DD: CH Pleasant-Grove Midas Milkspot EX91



We have high hopes for this young buck. He is the 2<sup>nd</sup> son of Milkdrop that we have retained, which tells you how much we thought of her. His sire, Jam, has proven to sire outstanding udders and improve production and we are excited to use a son now as well. We have several fresh MicDrop daughters and are impressed with the width, angularity, dairy strength, and especially the mammary systems we are seeing. We believe that MicDrop carries an A allele for Casein based on testing of offspring.

3. Pleasant-Grove Reverie **Roman** A2125107  
\*\*DNA\*\* Born 1-30-20

SS: ++\*B Sunshine Stella's Vicar  
S: ++\*B GCH Redwood Hills Sunshine Reverie  
SD: GCH Redwood Hills Fortune Teller

DS: Loughlin's Back To The Future  
D: Pleasant Grove Future Risotto EX91  
DD: CH Autumn Acres My Wisteria EX91



Pleasant Grove Future Risotto EX91

Roman combines our recent genetics of Future and Manny, with a 40+ year old buck who was way ahead of his time. Reverie has sired Nationally competitive daughters in the '80s, '90s, and 2000s, and their udders would still be competitive today. Roman himself has a presence and carriage about him, being one of the most structurally correct bucks we've had. With 7 Roman daughters in the herd, we see him adding strength and bone, smooth shoulders, correct leg set and length of foreudder. He is also adding some nice production to his daughters, with his best daughter topping 5000 pounds in 2024. He also sired the 7<sup>th</sup> place milking yearling at the 2024 National Show. With very consistent milking daughters, Roman was used more heavily this fall.  
Alpha S1 Casein E/F

4. Pleasant-Grove SSO **Milemarker** A2205294  
\*\*DNA\*\* Born 1-23-21

SS: \*B Pleasant Grove Liason Superior  
S: \*B Pleasant Grove Super Standout  
SD: SGCH Stardust Cordite Saba EX93

DS: Pleasant-Grove RR Freeze Frame  
D: Pleasant Grove Frame Myina EX91  
DD: Pleasant Grove Atlas Myuna EX91



Pleasant Grove Frame Myina EX91

Back to back EX91 dams and nearly back to back 4000 lb milk records from dam/granddam made Myina a strong choice for a buck mother. When she settled to our outstanding past buck, Standout, the decision to keep a son was easy. We freshened 4 daughters in 2023 and are pleased with the consistency of type, especially in udder shape, medial, and teat placement. With 13 milking daughters in our herd, and 12 more expected to freshen in 2025, we used Mile less this fall as we try to prove out some of our younger bucks. Mile will continue to be used heavily in the future. 1<sup>st</sup> Jr Get of Sire at the '23 and '24 Iowa State Fair. Milemarker's first milking daughter appraised VG89 as a yearling in 2023. **Semen Available: \$40/straw**

5. Pleasant-Grove MFM **Forge** A2205297  
Born 2-27-21

SS: ++\*B SG Kickapoo Valley Proud Hawkeye  
S: \*B McCann Farm HWK Maelstrom  
SD: SGCH McCann Farm Fern EX92

DS: Pleasant-Grove RR All Star Jam  
D: Pleasant Grove Jams Forever EX90  
DD: CH Pleasant Grove Machine Fixed EX91



Pleasant Grove Jams Forever EX90

The longer we saw Forever fresh as a milking yearling, the easier it was to justify keeping her son. Forever is a sharp angular doe with a beautifully shaped globular udder, strong medial and excellent teat placement. She appraised VG88 VEVE as a yearling, moved up to EX90 in 2023 and has excelled in the parlor with a record of 3339 lbs Milk as a yearling, 3480 lbs at age 2, and 4400 lbs as a 3 year old. Forge's sire is now a USDA ELITE sire. Forge has been stingy with doe kids, so we only have one milking daughter and will be freshening 2 more daughters in 2025. We plan to retain a bunch of Forge daughters in 2025.

6. Pleasant-Grove Mile of **Service** A2258308  
Born 2-13-22

SS: ++\*B Pleasant Grove Super Standout  
S: Pleasant Grove SSO Milemarker  
SD: Pleasant Grove Frame Myina EX91

DS: Pleasant-Grove Future Jailtime  
D: CH Pleasant Grove JT Salsa EX90  
DD: Pleasant Grove Framed Sienna VG89



CH Pleasant Grove JT Salsa EX90

Sometimes you just gotta take a little gamble, and that's what we did keeping a buck kid from yearling sire and dam, Milemarker and Salsa. We'll see how that gamble pays off in the spring when the first Service daughters freshen, but it looks very promising as Salsa has proven to be our top young doe (7<sup>th</sup> place 2 yr old – 2023 National Show) and Milemarker has an incredibly consistent group of kids with his first milking daughter appraising VG89 as a yearling. The plan is to freshen 4 Service daughters in 2024. These 4 daughters are currently a very uniform group that is showing consistent length of body, strong rear leg set, and smooth front ends. Service himself is a belted Chamoise, and is known to throw a variety of colors and splashes.



7. Pleasant-Grove Forge Joust A2326324  
\*\*DNA\*\* Born 2-1-23

SS: \*B McCann Farm HWK Maelstrom  
S: Pleasant Grove MFM Forge  
SD: Pleasant Grove Jams Forever EX90

DS: ++\*B SGCH Marran Rose's Rochester  
D: CH Pleasant Grove RR Jezebel EX92  
DD: Pleasant Grove Dreamt of Jeani



CH Pleasant Grove RR Jezebel EX92

Joust is an exciting young buck that we have a lot of faith in, so much so that he was our most heavily used buck this fall. His dam has appraised EX92 EEEE multiple times and has been 3<sup>rd</sup>/3<sup>rd</sup> udder both times she was shown at the National Show. Jezebel has also been a prolific brood doe, with 4 daughters appraised EX91 or higher and all with 4000 pound lactations. She is also the granddam of our 2023 ADGA National Reserve Junior Champion and Spotlight Sale doe. On the sire's side, Joust's sire comes from the same dam line that produced our National Premier Sire and USDA Elite Sire, Pleasant Grove RR Freeze Frame. We are expecting some big production from Joust daughters, as both grandsire's of Joust are current USDA ELITE sires, he has 4 maternal sisters with 4000 pound production, and his paternal granddam has multiple lactations over 4400 lbs.

8. Pleasant-Grove AK Matchmaker A2326360  
Born 1-29-23

SS: \*B Pleasant Grove RR Freeze Frame  
S: \*B Kara Kahl Akimoto  
SD: GCH Kara Kahl PGW Akebono EX94

DS: ++\*B Windrush Farms Blizzard Manny  
D: Pleasant Grove WFM Materialize EX91  
DD: Pleasant Grove RR Matrix EX92



Pleasant Grove WFM Materialize EX91

We are excited about this yearling buck, as he comes from a deep maternal line of strong production and type as well as being sired by a USDA ELITE sire. This pedigree also combines many influential bucks that we've used in recent years, such as Rochester, Freeze Frame, and Manny. Match's paternal granddam is also the 2021 National GCH/BU and the only purebred Alpine to ever appraise EX94 EEEE. We expect Match to sire outstanding udders, add length and levelness of top line, and smooth out shoulders. We have 4 fancy daughters already, planning to freshen 3 of them in 2025.

9. Pleasant-Grove Super Mamoa A2326325  
\*\*DNA\*\* Born 2-2-23

SS: ++\*B Hoach's Lyric Liason  
S: Pleasant Grove Liason Superior  
SD: CH Pleasant Grove KVGC Savvy EX90

DS: Mainstay KSP Seinfeld  
D: Pleasant Grove Seinfeld Mimosa EX91  
DD: Pleasant Grove Epic Mission



Pleasant Grove Seinfeld Mimosa EX91

Mamoa is a throwback to one of our prominent sires of 20 years ago, Pleasant Grove Liason Superior. Mamoa is a paternal brother to our National Class winner, SGCH Pleasant Grove Super Mink, as well as 4 time National Premier Sire, GCH Pleasant Grove Super Saga. Superior made correct, stylish daughters with outstanding udder shape, attachment, and teat placement. We expect the same from Mamoa, who is also a maternal brother to the 3<sup>rd</sup> place milking yearling at the 2023 National Show. We are looking forward to freshening Mamoa's first 2 daughters in 2025.

Alpha S1 casein E/E

10. Pleasant-Grove Mile Arch A2326372  
Born 1-28-23

SS: \*B Pleasant Grove Super Standout  
S: Pleasant-Grove SSO Milemarker  
SD: Pleasant-Grove Frame Myina EX91

DS: Pleasant-Grove RR Freeze Frame  
D: Kara Kahl Framed Arlene VG85  
DD: GCH Kara Kahl Saga Arwyn EX91



Kara Kahl Framed Arlene

Another yearling buck that will figure prominently in our breeding plans for the next few years, Arch combines all the best Pleasant Grove bucks we've bred in the last 25 years into one linebred package: He has the 2021 National Premier Sire (Freeze Frame) on both top and bottom of the pedigree, 4 time National Premier Sire (Saga) on the maternal side, Standout (sire of 2011 Nat'l RGCH) on the paternal side, Pleasant Grove Amen Longitude on the maternal side, and Pleasant Grove Liason Superior (see Mamoa above) on both sides. We are still waiting for our first Arch doe kids, but if they are anything like Arch's littermate sister, they will have the Pleasant Grove trademark udders, toplines and rear leg set.

11. Pleasant-Grove Jamon Mojo A2326371  
Born 2-22-23

SS: \*B McCann Farm HWK Maelstrom  
S: Pleasant-Grove MFM Jamon  
SD: Pleasant-Grove Zorro Jamboree EX91

DS: Pleasant-Grove RR Freeze Frame  
D: Pleasant Grove Frame Mojito VG87  
DD: Pleasant Grove Seinfeld Mimosa EX91





Dam: Pleasant Grove Frame Mojito VG87

Mojo was kept when I received an offer I couldn't refuse to send his sire to Canada. His dam appraised VG87 as a milking yearling and was also the 3<sup>rd</sup> place milking yearling at the 2023 National Show. Mojo will also offer intriguing linebreeding possibilities as his sire is a maternal brother to our past sire, Pleasant Grove RR All Star Jam and his dam is a maternal brother to our herdsire Mamoa.

12. \*B Alder\*Rose Sin City A2315913  
\*\*DNA\*\* Born 5-4-23

SS: ++\*B Pleasant-Grove Super Saga  
S: Pleasant-Grove Saga Money  
SD: SGCH Pleasant-Grove Super Mink EX91

DS: +\*B GCH Cherry Glen Real Thing Driver  
D: GCH PJ-Baileys' Driver Absynth EX92  
DD: PJ-Baileys' Denali Admire Me



I feel very fortunate to have the privilege to use this buck. I was originally offered the chance to purchase him shortly after he was born, but I reluctantly turned him down because of his late birthdate. Fortunately, he was purchased by a friend in Illinois, and I was able to make arrangements to lease him for a few weeks this fall. Sin City ties back in to my herd very nicely on both sides of his pedigree; the full Pleasant Grove pedigree on the top, and on the bottom 2 ways. He is from the same dam line as our past buck, PJ-Baileys' Charming Assassin. Sin City's granddam is also sired by Pleasant Grove Nut Denali, a maternal brother to Pleasant Grove RR Dayvine EX93. Sin City's beautiful dam is pictured above. Sin City may be an unproven yearling, but I have enough confidence in his pedigree that I have used him on some of our best does. Alpha S1 casein E/F.